



**Marin Clean Energy
SPECIAL MEETING**
Thursday, September 18, 2014
9:30AM – 4:00PM

**The Marin Art & Garden Center, Livermore Pavilion
30 Sir Francis Drake Blvd. Ross, CA 94957**

Dawn Weisz
Executive Officer

Damon Connolly
Chair
City of San Rafael

Kathrin Sears
Vice Chair
County of Marin

Bob McCaskill
City of Belvedere

Sloan C. Bailey
Town of Corte Madera

Larry Bragman
Town of Fairfax

Kevin Haroff
City of Larkspur

Garry Lion
City of Mill Valley

Denise Athas
City of Novato

Tom Butt
City of Richmond

Carla Small
Town of Ross

Ford Greene
Town of San Anselmo

Ray Withy
City of Sausalito

Emmett O'Donnell
Town of Tiburon

1 (888) 632-3674
mceCleanEnergy.org

781 Lincoln Ave., #320
San Rafael, CA 94901

Agenda Page 1 of 2

Swearing In of New Board Member

1. Board Announcements (Discussion)
2. Public Open Time (Discussion)
(Public comments may be limited to 2 minutes)
3. Report from Executive Officer (Discussion)
4. Historical Review and Annual Update (Discussion)
(9:45-10:30)
 - Historical timeline, annual highlights, year ahead goals
 - Communications
 - Procurement
 - Regulatory and Legislative
5. Energy Efficiency (Discussion)
(10:30 – 11:00)
 - Current Best Practices
 - Community Input on MCE programs,
 - MCE Post-2015 Energy Efficiency Proposal

Break – 15 minutes

6. MCE Identity and Governance (Discussion)
(11:15 - 12:15)



Agenda material can be inspected in the Marin County Sheriff's lobby, located at 3501 Civic Center Drive, San Rafael, CA 94903. The meeting facilities are in accessible locations. If you are a person with a disability and require this document in an alternate format (example: Braille, Large Print, Audiotape, CD-ROM), you may request it by using the contact information below. If you require accommodation (example: ASL Interpreter, reader, note taker) to participate in any MCE program, service or activity, you may request an accommodation by calling (415) 464-6032 (voice) or 711 for the California Relay Service or by e-mail at djackson@mceCleanEnergy.org not less than **four work days** in advance of the event.



**Marin Clean Energy
SPECIAL MEETING**
Thursday, September 18, 2014
9:30AM – 4:00PM

**The Marin Art & Garden Center, Livermore Pavilion
30 Sir Francis Drake Blvd. Ross, CA 94957**

Dawn Weisz
Executive Officer

Damon Connolly
Chair
City of San Rafael

Kathrin Sears
Vice Chair
County of Marin

Bob McCaskill
City of Belvedere

Sloan C. Bailey
Town of Corte Madera

Larry Bragman
Town of Fairfax

Kevin Haroff
City of Larkspur

Garry Lion
City of Mill Valley

Denise Athas
City of Novato

Tom Butt
City of Richmond

Carla Small
Town of Ross

Ford Greene
Town of San Anselmo

Ray Withy
City of Sausalito

Emmett O'Donnell
Town of Tiburon

1 (888) 632-3674
mceCleanEnergy.org

781 Lincoln Ave., #320
San Rafael, CA 94901

Agenda Page 2 of 2

Lunch - 1 hour

7. MCE Local Renewable Projects: Presentations from Feed in Tariff Project Developers (Discussion)
(1:15 – 1:45)
8. MCE Local Renewable Projects Continued (Discussion)
(1:45 – 2:30)
 - Sol Shares
 - MCE-Owned Projects/Deep Green
9. Completion of any Unfinished Items
(2:30 – 3:30)
10. Board Member & Staff Matters (Discussion)
11. Adjourn



Agenda material can be inspected in the Marin County Sheriff's lobby, located at 3501 Civic Center Drive, San Rafael, CA 94903. The meeting facilities are in accessible locations. If you are a person with a disability and require this document in an alternate format (example: Braille, Large Print, Audiotape, CD-ROM), you may request it by using the contact information below. If you require accommodation (example: ASL Interpreter, reader, note taker) to participate in any MCE program, service or activity, you may request an accommodation by calling (415) 464-6032 (voice) or 711 for the California Relay Service or by e-mail at djackson@mceCleanEnergy.org not less than **four work days** in advance of the event.



Renewable Energy Procurement: 2014 Contract Status

Greg Brehm

Director of Power Resources | Marin Clean Energy

September 18, 2014



MCE Renewable Energy - New Projects

Under Contract and Under Construction :

- Recurrent Energy Kansas, 20 MW Solar – Jan, 2015
- EDP Rising Tree Wind, 99 MW Wind – July 2015
- EDF – Cottonwood, 23 MW Solar – March 29, 2015

Under Negotiation and In Development:

- Counterparty under negotiation, Approximately 30 MW Solar, Tentative - January 2018
- Counterparty under negation, Approximately 4 MW Landfill Gas, Tentative – January 2015

Counterparty - Under Negotiation

Project: In Development

- Contract Executed: TBD - under negotiation
- Online Date: Tentative - Dec 31, 2016
- Commercial Operation Date: Tentative - Jan 1, 2018
- Product: Solar Photovoltaic
- Location: Central CA
- Product: As Available energy – Full Capacity Deliverability Status
- Capacity: Approximately 30 MW
- Annual energy: Approximately 86,000 MWhs
- *Serving approximately 14,300 average MCE residential customers*
- Contract Term: Tentative - Jan 2018 to Dec 2033 (15 Years)

Counterparty - Under Negotiation

Project: In Development

- Contract Executed: TBD - under negotiation
- Online Date: Tentative - November, 2015
- Commercial Operation Date: Tentative - Jan 1, 2015
- Product: Landfill gas
- Location: Northern CA
- Product: Base Load– Full Capacity Deliverability Status
- Capacity: Approximately 4 MW
- Annual energy: Approximately 29,000 MWWhs,
- *Serving approximately 5,300 average MCE residential customers*
- Contract Term: Tentative - Jan 2015 to Dec 2034 (20 Years)

Recurrent Energy Kansas

Project: RE Kansas

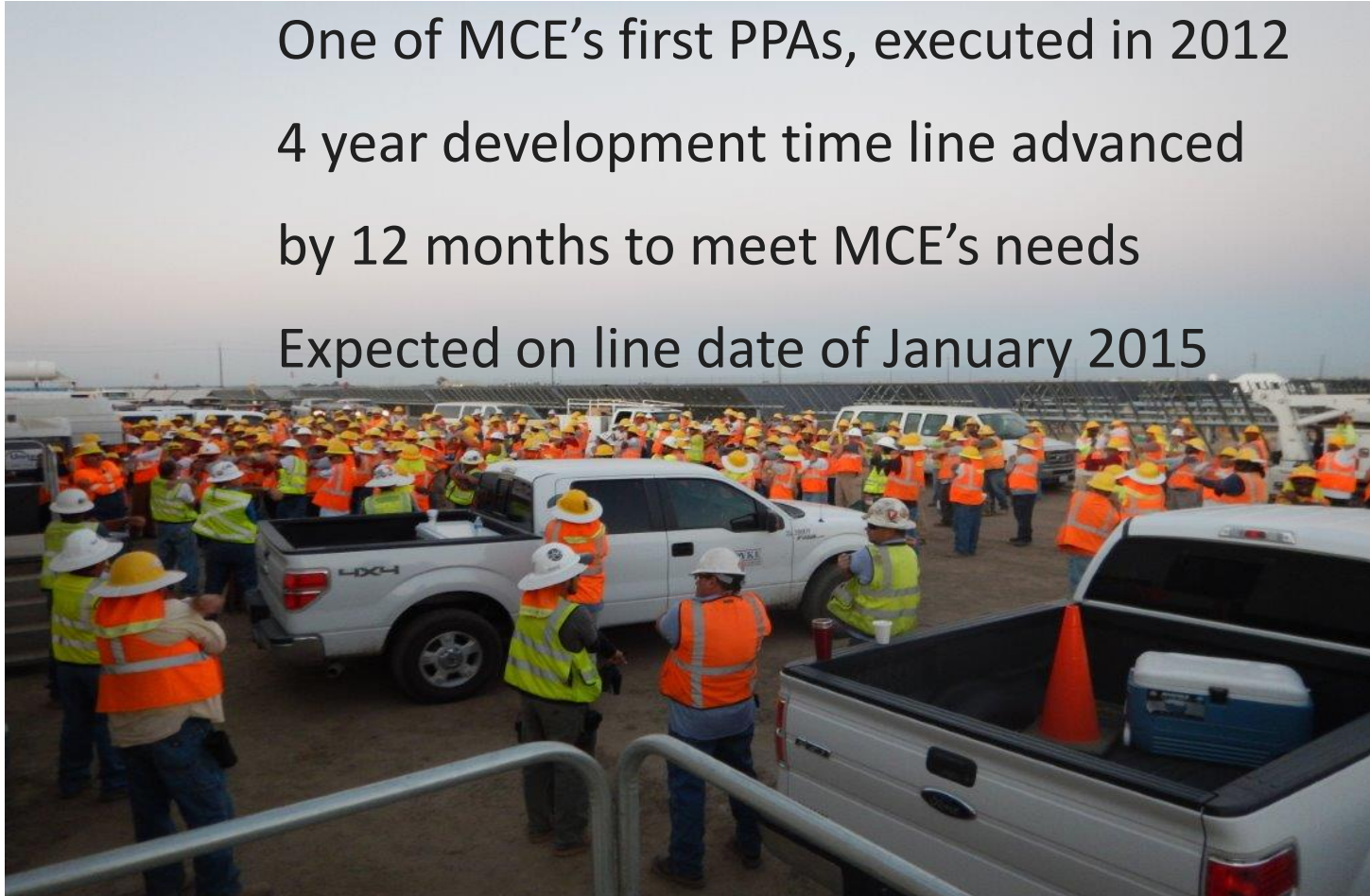
- **Contract Executed: Aug 3, 2012 , assigned to Dominion Feb 13, 2014**
- **Online Date: November 1, 2014**
- **Commercial Operation Date: Jan 1, 2015**
- **Product: Solar Photovoltaic**
- **Location: Kings County, 190 miles southeast of San Rafael**
- **Contracted Capacity: 20 MW**
- **Annual Energy: 49,000 MWhs ,**
- *Serving 8,000 average MCE residential customers*
- **Contract Term: Jan 1, 2015 through Dec 31, 2017 (3 years)**
- **Site visit scheduled for Sept 23, 2014**



Recurrent Energy Kansas

More than 300 California jobs created and supported by MCE in a single solar contract – RE Kansas 20 MW

One of MCE's first PPAs, executed in 2012
4 year development time line advanced
by 12 months to meet MCE's needs
Expected on line date of January 2015



EDP Renewables – Rising Tree Wind Farm

Project: Rising Tree Wind

- **Contract Executed: September 5, 2014**
- **Online Date: January 2015**
- **Commercial Operation Date: July 2015**
- **Product: Wind**
- **Location: Mojave, Kern County, 300 miles southeast of San Rafael**
- **Contracted Capacity: Up to 100 MW**
- **Annual energy production: 144,000 MWhs – 2015; 222,000 MWh – 2016 through 2018,**
- *Serving 24,000 -37,000 average MCE residential customers*
- **Contract Term: July 2015 to Dec 2018**
- **Site visit scheduled for Sept 25, 2014**



EDF Cottonwood

Project: EDF Cottonwood

- **Contract Executed: July 8, 2011, pending assignment to Dominion**
- **Online Date: Mar 29, 2015**
- **Commercial Operation Date: Mar 29, 2015**
- **Product: Solar Photovoltaic**
- **Location: Kings County & Kern County, 200 miles southeast of San Rafael**
- **Contracted Capacity: 23 MW**
- **Annual Energy: 64,000 MW_hs ,**
- *Serving 10,600 average MCE residential customers*
- **Contract Term: Mar 29, 2015 through Mar 28th, 2040 (25 years)**
- **Site visit scheduled for Sept 24, 2014**



Recurrent Energy - Mustang

Project: RE Mustang Solar

- **Contract Executed: TBD - under negotiation**
- **Online Date: Dec 31, 2016**
- **Commercial Operation Date: Jan 1, 2018**
- **Product: Solar Photovoltaic**
- **Location: Fresno County, 145 miles southeast of San Rafael**
- **Product: As Available energy – Full Capacity Deliverability Status**
- **Capacity: 30 MW**
- **Annual energy: 86,000 MWhs,**
- *Serving 14,300 average MCE residential customers*
- **Contract Term: Jan 2018 to Dec 2033 (15 Years)**



Waste Management- Redwood Landfill

Project: WM Redwood Landfill

- **Contract Executed: TBD - under negotiation**
- **Online Date: November, 2015**
- **Commercial Operation Date: Jan 1, 2015**
- **Product: Landfill gas**
- **Location: Novato, Marin County**
- **Product: Base Load– Full Capacity Deliverability Status**
- **Capacity: 4 MW**
- **Annual energy: 29,000 MWWhs,**
- *Serving 5,300 average MCE residential customers*
- **Contract Term: Jan 2015 to Dec 2034 (20 Years)**



MCE Renewable Energy Contracts

Complete and currently delivering energy to MCE:

- **San Rafael Airport FIT – COD October 29, 2012**
- **GenPower - Energy 2001 – COD Feb 11, 2013**
- **G2 Energy Hay Road– COD July 2, 2013**
- **G2 Energy Ostrom Road– COD September 11, 2013**
- **Calpine – COD Jan 1, 2015**
- **Exelon – COD July 1, 2015**



GenPower - Energy 2001

Project: Energy 2001

- **Contract Executed: July 6, 2012**
- **Online Date: October 29, 2012**
- **Commercial Operation Date: February 11, 2013**
- **Product: Landfill gas (existing + expansion) baseload energy only**
- **Location: Placer County, 85 miles north east of San Rafael**
- **Contracted Capacity: 4.8 MW - delivering 3.55 MW**
- **Annual Energy: 31,098 MWhs @ 3.55 MW average capacity, 91.5% of expected deliveries– 34,000 MWhs expected under contract**
- *Serving 5,100 average MCE residential customers*
- **Contract Term: Feb 11, 2013 through Feb 10, 2033 (20 years)**



GenPower - Energy 2001



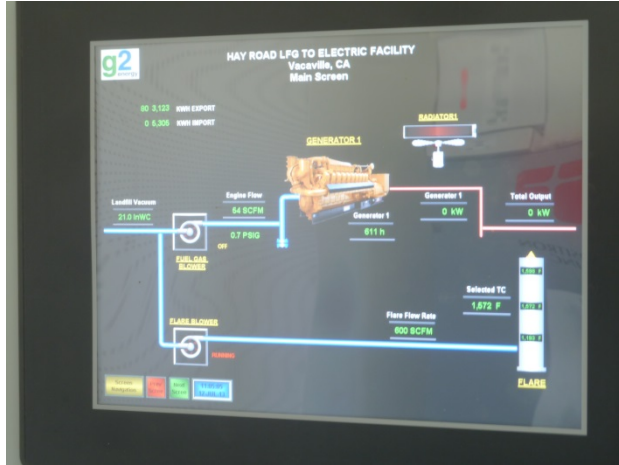
G2 Energy – Hay Road

Project: Hay Road

- **Contract Executed: December 3, 2010**
- **Online Date: June 18, 2013**
- **Commercial Operation Date: July 2, 2013**
- **Product: Landfill gas (new) base load energy only**
- **Location: Solano County, 45 miles east of San Rafael**
- **Contracted Capacity: 1.6MW - delivering 1.50 MW**
- **Annual Energy: 12,500 MWhs @ 1.50 MW average capacity**
- *Serving 2,000 average MCE residential customers*
- **Contract Term: July 2, 2013 through July 1, 2031 (18 years)**



G2 Energy – Hay Road



G2 Energy – Ostrom Road

Project: Ostrom Road

- **Contract Executed: December 3 , 2010**
- **Online Date: August 30, 2013**
- **Commercial Operation Date: TBD**
- **Product: Landfill gas (existing + expansion) baseload energy only**
- **Location: Yuba County, 100 miles north east of San Rafael**
- **Contracted Capacity: 1.6MW - delivering 1.50 MW**
- **Annual energy: 12,500 MWhs @ 1.50 MW average capacity**
- *Serving 2,000 average MCE residential customers*
- **Contract Term: August 30, 2013 through August 29, 2031 (18 years)**



G2 Energy – Ostrom Road



Projects serving 84,300 MCE Customers

Questions? Comments?





September 18, 2014

TO: Marin Clean Energy Board
FROM: Beckie Menten, Energy Efficiency Director
RE: Energy Efficiency Update (Agenda Item #5)

Dear Board Members:

SUMMARY:

2014 has been a busy year for the MCE program. We have seen all of our programs grow from initial phases to full implementation. Though there have been challenges, our agency has begun to establish itself as an energy efficiency provider in the region.

Energy efficiency has always been an integral component of the MCE vision. The initial Business Plan included energy efficiency, and energy efficiency was included in the MCE Implementation Plan prepared in 2009. In February of 2012, the MCE Board approved the Marin Clean Energy Efficiency Program Plan, placing energy efficiency squarely amongst the programs of the MCE organization. To allow for fulfillment of this plan, MCE requested funding from the California Public Utilities Commission (CPUC).

In July of 2012, MCE submitted an application for funding under the 2013 -2014 Energy Efficiency Funding Cycle (A. 12-11-007). The application was based on the initial Energy Efficiency Program Plan, and included the following proposed sub-programs:

- Multifamily
- Small commercial
- Single family utility demand reduction pilot program and
- Four financing pilot programs: On Bill Repayment for multifamily, small commercial, and single family, and a standard offer pilot.

This application for funding was approved on the 9th of November, 2012, allocating over \$4 million to MCE for the implementation of energy efficiency programs.

2013 Savings Summary:

Table 1: Costs and Savings by Program

Program	Total Cost	Energy Savings (kWh)	Demand Savings (kW)	Gas Savings (therms)	TRC
MCE01 - Multifamily	\$ 226,777.66	107,226	9.54	5,163.86	0.44
MCE02 - Commercial	\$ 259,206.69	220,648	25.66	(768.99)	0.29
MCE03 - Single Family	\$ 220,413.19	42,970		2,326.00	0.07
MCE04 - Finance	\$ 70,327.27				
Grand Total	\$ 776,724.81	370,844	35.20	6,720.87	

Table 2: Costs by Program by Category

Cost Categories	MCE01 - Multifamily	MCE02 - Commercial	MCE03 - Single Family	MCE04 - Finance
AdminCostsOverheadAndGA	\$ 24,645.56	\$ 34,610.88	\$ 15,936.52	\$ 60,695.67
AdminCostsOther				
MarketingOutreach	\$ 9,122.96	\$ 308.48	\$ 11,154.42	\$ 6,563.60
DirectImplementationActivity	\$ 135,801.29	\$ 202,348.01	\$ 191,975.59	\$ 3,068.00
DirectImplementationInstallation	\$ 32,602.82			
DirectImplementationHardwareAndMaterials	\$ 15,361.03		\$ 1,346.66	
DirectImplementationRebateAndInspection	\$ 9,244.00	\$ 21,939.32		
Total	\$ 226,777.66	\$ 259,206.69	\$ 220,413.19	\$ 70,327.27

2013 – 2014 Cumulative Savings to Date:

After 18 months of program implementation, MCE has completed more than 1,000 energy audits, presented to more than 1,000 students, facilitated the creation over 1,000 Action Plans and mailed Home Energy Reports to over 18,500 homes. The below report is a summary of the MCE Energy Efficiency Portfolio's expenses and savings for each sub-program from inception until the end of July 2014.

Table 3: Cumulative Results, Program Inception to July 2014

Program	2013-2014 Budget	Program Expenditures	Installed Energy Savings (Gross Annual kWh)	Installed Gas Savings (Gross Annual Therms)	Number of Completed Projects	Number of Projects in Process
Multifamily	\$860,971	\$324,520	107,595	6,232	50 buildings	82 buildings
Small Commercial	\$1,380,817	\$441,154	522,142	-2,234 ¹	64 businesses	136 businesses*
Single Family	\$473,417	\$410,914	322,445	1,996	N/A	N/A
Financing Pilots	\$1,300,000	\$354,186	N/A	N/A	0	1
Portfolio Total:	\$4,015,205	\$1,530,774	952,182	5,994	N/A	N/A

*Split between MCE, Marin Energy Watch and East Bay Energy Watch

Table 4: Program Performance Metrics 2013 - 2014:

Multifamily Program	
Multifamily Buildings Audited	301
Multifamily Units Provided Free Direct Install Services	919
Commercial Program	
Commercial Facilities Audited	322*
Single Family Program	
Students Reached through Schools Program	1,125
Action Plans Created on Website	1,107
Homes Receiving Utility Reports	18,528

*Split between MCE, Marin Energy Watch and East Bay Energy Watch

¹ This program installs high efficiency lighting, which reduces the heat output from inefficient lighting. However, this results in an increased heating demand thus therm savings, most often associated with space conditioning, are reported as negative.

Summary of Challenges:

- Small commercial – the small commercial programs across the state are encountering challenges in meeting their targets. Previous program design focused on providing aggressive incentives for easy to accomplish lighting retrofits, which have high savings potential. With changes in code, many easy to capture measures are no longer eligible for incentives and therefore the incentive dollars are covering less of the project and the overall savings figures per investment are lower. Additionally, many of the remaining savings potential is with building envelope and HVAC measures, and often the building occupant is not the building owner and thus does not have decision making control over this equipment. The program recently increased incentives, and we are monitoring closed projects to see if this has resulted in improved uptake.
- Multifamily – multifamily programs have long lead times, often taking months to accomplish. While we have seen a significant uptick in the program applications in late spring, it will be months before these savings are on the book.
- Delays in implementation of the on-bill repayment program, due in part to negotiations over bill access with PG&E, have potentially also hampered program ramp up as the financing should support the ability of project applicants to complete the full scope of work.

Proposed Changes to Programs:

To improve results, the MCE energy efficiency team has been considering changes to program design. These program changes are being discussed with Energy Division, and would likely need to be summarized in a Program Implementation Plan addendum. The proposed program changes, to be implemented by 2015, are summarized below.

Table 5: Proposed Changes to Existing Programs

Problem	Proposed Change
Low uptake in the small commercial program due to decreasing margins in savings	Program modifications aim at targeting the mid-size commercial sector where there is likely more opportunity. This includes more sophisticated energy assessments and deeper scope of savings, coupled with further vetting up front of target audience and sales training for contractors to close the deal.
Attrition in the multifamily program	Starting in 2015, we would charge a deposit for the energy assessments. This would function as an upfront fee that would be repaid at the time of the incentive payment. The intention is to screen projects and focus on those with the highest likelihood of accomplishing the project. The program is also considering raising incentives.
On-Bill Repayment for Single Family participation	To increase participation in the on-bill repayment program, MCE is proposing that single measures be eligible for financing. This would mean that rather than requiring a Home Upgrade project which can be costly or confusing, or limiting to emergency equipment replacement, any project that qualifies for an energy efficiency rebate would be eligible for financing.
Standard Offer Program	MCE has conducted significant research into the

	<p>standard offer program concept, and feels that the funding and time frame available for this pilot would not be sufficient to demonstrate the program concept. MCE is considering proposing a reallocation of this funding to implement a pilot program, potentially in conjunction with local water agencies, to focus on the water energy nexus. This is supported by a recent proceeding into the water energy nexus which encouraged program administrators to implement water and energy savings measures by reallocating funding within their existing portfolios.</p>
--	---

2015 Funding Request and 2016 Program Planning:

The California Public Utilities Commission has indicated in the Order Instituting Rulemaking for post-2014 energy efficiency programs that the Commission is potentially considering sweeping changes to the energy efficiency portfolio process for 2016 and beyond. Among the changes is the possibility to extend the program cycle from the existing three year cycle to a longer term ten year cycle. To accommodate the need to plan for this potentially significant change, the CPUC also proposed a simple funding request for 2015. MCE submitted its funding request in March of 2014, seeking a simple extension of program implementation funds²; the proposed decision on 2015 funding, anticipated in June of 2014, has not yet been released.

MCE has been participating in a stakeholder group, convened by the Natural Resources Defense Council and made up of a wide range of industry professionals (investor owned utilities, energy efficiency industry representatives, ratepayer advocate groups, and local governments) to consider possible recommendations on new portfolio design. A recommendation from this group is anticipated in November of this year.

While these discussions are ongoing, MCE has determined that it will be advantageous to be proactive, rather than reactive, in this process. MCE is envisioning proposing fairly dramatic changes to its existing programs, including implementation of a broader suite of programs that will allow us to better serve our service territory and achieve cost effectiveness targets. Additionally, MCE is seeking to design a program focused on greenhouse gas mitigation and market transformation in the energy efficiency sector, potentially including alternative metrics for gauging success that capture lifetime impacts. Thus MCE has begun planning for its next generation of energy efficiency programs. This process has involved reviewing energy usage characteristics in the service territory, identifying existing programs, and soliciting information from both the general public and specific subject matter experts.

To collect information from the community, MCE planned, organized and hosted six community workshops held at different locations throughout MCE's service territory. At these workshops, MCE staff presented to the community on existing programs, provided information on local energy use characteristics, and collected feedback from community

² The exception to this extension of funds is the financing program. The majority of dollars for the financing program had been associated with credit enhancement, and as there have been no loans there is no need for additional funds. MCE instead requested funding for marketing the financing program.

members on how MCE's Energy Efficiency Programs could best meet their needs. Community members were also given the opportunity to sign up for an energy efficiency specific list serve to stay in the loop as the energy efficiency program design for 2016 is shaped. Three of these five workshops had more specific focus, including a workshop on wineries and vineyards in Napa, a workshop on agriculture in Point Reyes Station, and a workshop focused on single family opportunities that was coordinated with help from the Resilient Neighborhoods program.

After a summer full of workshops, the MCE Energy Efficiency team has begun drafting program design elements. The objective is to have materials ready for Board review and public comment by mid-November, with many elements of the program implementation plan drafted by the end of this year. More details on the work plan are listed below.

Table 6: Summary of Workshops on 2016 Efficiency Program Design

Location	Date	Focus	Attendees
San Rafael	5/29/14	Subject Matter Expert Workshops	14
Richmond	6/23/14	MCE Energy Efficiency Programs	20
San Rafael	7/24/14	MCE Energy Efficiency Programs	23
Napa	7/30/14	Agricultural Energy Efficiency Programs	12
Novato	8/7/14	Residential Energy Efficiency Programs	9
West Marin	8/13/14	Agricultural Energy Efficiency Programs	9

Proposed Timeline of 2016 Efficiency Program Development with Milestones

Research and Analysis

Workshop Data Analysis – due: 9/15/14

Matrix of Leverage-able Programs – due: 10/1/14

Program Design

Multifamily:

Design Description – due: 9/2/14

Measure Identification – due: 9/17/14

Delivery Model and Logic Model – due: 9/17/14

Savings Targets and PPMs – due: 9/19/14

Budget and Incentives – due: 9/24/14

Cost Effectiveness Analysis – due: 9/26/14

Commercial/Industrial:

Design Description – due: 9/11/14

Measure Identification – due: 9/26/14

Delivery Model and Logic Model – due: 9/25/14

Savings Targets and PPMs – due: 9/30/14

Budget and Incentives – due: 10/3/14

Cost Effectiveness Analysis – due: 10/7/14

Single Family:

Design Description – due: 9/22/14

Measure Identification – due: 10/7/14

Delivery Model and Logic Model – due: 10/6/14
Savings Targets and PPMs – due: 10/9/14
Budget and Incentives – due: 10/14/14
Cost Effectiveness Analysis – due: 10/16/14

Financing:

Design Description – due: 10/1/14
Measure Identification – due: 10/16/14
Delivery Model and Logic Model – due: 10/15/14
Savings Targets and PPMs – due: 10/20/14
Budget and Incentives – due: 10/23/14

Agriculture:

Design Description – due: 10/10/14
Measure Identification – due: 10/27/14
Delivery Model and Logic Model – due: 10/24/14
Savings Targets and Program Performance Metrics – due: 10/24/14
Budget and Incentives – due: 10/29/14
Cost Effectiveness Analysis – due: 11/5/14

Program Design Review – 11/6/14 – 11/14/14

EE Team Review
Regulatory Team Review
Dawn Review

Board Presentation 11/6/14 and 12/4/14

Public Comment Period 11/14/14 – 12/19/14

Recommendation: This is a discussion item only.



Renewable Energy Procurement: 2014 Local Projects & Feed-in Tariff

Greg Brehm

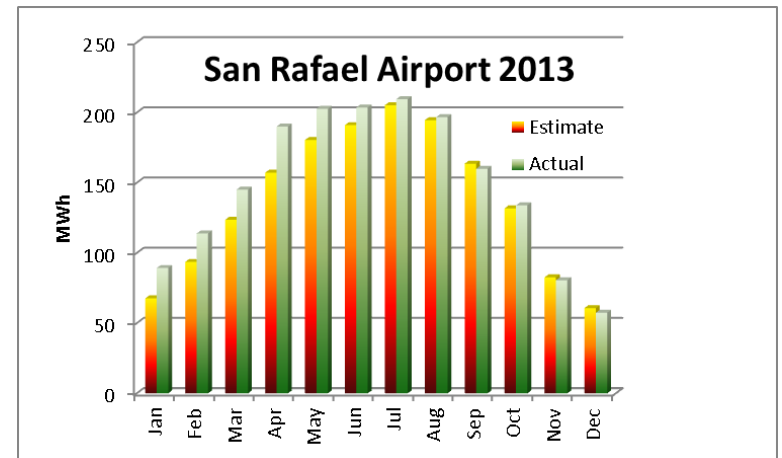
Director of Power Resources | Marin Clean Energy

September 18, 2014



Project: San Rafael Airport - 972 kW Feed-in Tariff project

- Contract Executed: May 8, 2012
- Online Date: October 23, 2012
- Commercial Operation Date: October 23, 2012
- Product: Solar "as available" Energy Only
- Location: San Rafael
- Contracted Capacity: 972 kW
- Annual Energy: 1800 MWh
- Power for 300 MCE customers
- Contract Term: October 23, 2012 to October 22, 2032 (20 years)



San Rafael Airport



MCE Local Development Contracts

EDF

- 1 MW Marin Carport – TBD

Brownfield reuse at Chevron Richmond refinery

- Site control with Chevron –approved September 5
- 2 -12 MW
- Land option approved
- Developing work plan for site design and due diligence
- Interconnection application

Port of Richmond

- Site control negotiations ongoing
- Multiple sites potentially available
- Project compatibility with existing Tenant rights a stumbling block

EDF Marin Carport (Buck Institute)

Project: EDF Marin Carport

- Contract Executed: July 8, 2011
- Online Date: TBD
- Commercial Operation Date: TBD
- Product: Solar Photovoltaic
- Location: Novato, CA
- Contracted Capacity: 1 MW
- Annual Energy: 1,900 MWhs
- Power for 300 average MCE residential customers
- Contract Term: Mar 29, 2015 through Mar 28, 2040 (25 years)

Project: Brownfield reuse at Chevron Richmond Refinery

- Land Option Executed: Sept 5, 2014
- Online Date: Dec 31, 2016
- Projected Commercial Operation Date: Jan 1, 2017
- Product: Solar Photovoltaic
- Location: Brownfield reuse at Chevron refinery
- Product: As Available energy – Full Capacity
Deliverability Status
- Capacity: 2 – 12 MWMW
- Annual energy: 3,600 to 21,600 MWhs
- Power for 3,600 average MCE residential customers
- Contract Term: 25 Years with one 5 year extension

Port of Richmond

Project: Richmond Port Property

- Land Option Executed: TBD
- Online Date: TBD
- Commercial Operation Date: TBD
- Product: Solar Photovoltaic
- Location: Richmond
- Product: As Available energy – Full Capacity Deliverability Status
- Capacity: 0.5 - 1.5 MW
- Annual energy: 1,000 to 2,800 MWhs
- Power for 460 average MCE residential customers
- Contract Term: 25 years with one 5 year extension

MCE Feed In Tariff Contracts

MCE FIT applications:

- Sol Shares - Cooley Quarry from REP Solar 990 kW
- FIT Queue # 2 - Cooley Quarry, REP Solar 500 kW
- FIT Queue #3 - Larkspur RE (Cost Plus) 286 kW
Extension - July 2015
- FIT Queue #4 --Richmond NWCorner 998 kW
Goodrick
- FIT Queue #5 – Richmond Parkway 998 kW
- FIT Queue #6 – Binford Road Storage 990 kW
(Size may be Reduced)

FIT 4,762 kW

MCE Feed In Tariff Contracts

MCE FIT Conditions:

The MCE Board has established the following price schedule, consistent with the energy delivery profiles specified in this schedule, which will be used to determine prices paid to eligible resources meeting the requirements of this schedule. MCE's Board of Directors may periodically review and revise this price schedule.

FIT Stages	Peak	Base Load	Intermittent	Projects	Capacity	Contracted Capacity
Condition 1	\$137.66	\$116.49	\$100.57	SR Airport Cooley Quarry Larkspur Cost Plus Richmond- Goodrick	972 kW 500kW 286kW 998kW	2,756kW
Condition 2	\$120.00	\$105.00	\$ 95.00	Richmond Parkway Binford Storage	998kW 990kW	1,988kW
Condition 3	\$115.00	\$100.00	\$ 90.00			1,256kW Available
Condition 4	\$110.00	\$ 95.00	\$ 85.00			
Condition 5	\$105.00	\$ 90.00	\$ 80.00			

Questions? Comments?