



**Marin Clean Energy
Executive Committee Meeting
Wednesday, October 15, 2014
9:00 A.M.**

**San Rafael Corporate Center, Boro Room
750 Lindero Street, San Rafael, CA 94901**

Agenda Page 1 of 2

Dawn Weisz
Executive Officer

Damon Connolly
Chair
City of San Rafael

Kathrin Sears
Vice Chair
County of Marin

Bob McCaskill
City of Belvedere

Sloan C. Bailey
Town of Corte Madera

Larry Bragman
Town of Fairfax

Kevin Haroff
City of Larkspur

Garry Lion
City of Mill Valley

Brad Wagenknecht
County of Napa

Denise Athas
City of Novato

Tom Butt
City of Richmond

Carla Small
Town of Ross

Ford Greene
Town of San Anselmo

Ray Withy
City of Sausalito

Emmett O'Donnell
Town of Tiburon

1 (888) 632-3674
mceCleanEnergy.org

781 Lincoln Ave., #320
San Rafael, CA 94901

- 1. Board Announcements (Discussion)**
- 2. Public Open Time (Discussion)**
- 3. Report from Executive Officer (Discussion)**
- 4. Approval of 8.20.14 Meeting Minutes (Discussion/Action)**
- 5. County of Napa Outreach (Discussion)**
- 6. Regulatory Affairs (Discussion)**
- 7. Draft Addendum to Agreement with Noble Energy Solutions (Discussion/Action)**
- 8. Office Move Update (Discussion)**
- 9. Review 11.6.14 Draft Board Agenda (Discussion)**



Agenda material can be inspected in the Marin County Sheriff's lobby, located at 3501 Civic Center Drive, San Rafael, CA 94903. The meeting facilities are in accessible locations. If you are a person with a disability and require this document in an alternate format (example: Braille, Large Print, Audiotape, CD-ROM), you may request it by using the contact information below. If you require accommodation (example: ASL Interpreter, reader, note taker) to participate in any MCE program, service or activity, you may request an accommodation by calling (415) 464-6032 (voice) or 711 for the California Relay Service or by e-mail at djackson@mceCleanEnergy.org not less than **four work days** in advance of the event.



**Marin Clean Energy
Executive Committee Meeting
Wednesday, October 15, 2014
9:00 A.M.**

Dawn Weisz
Executive Officer

Damon Connolly
Chair
City of San Rafael

Kathrin Sears
Vice Chair
County of Marin

Bob McCaskill
City of Belvedere

Sloan C. Bailey
Town of Corte Madera

Larry Bragman
Town of Fairfax

Kevin Haroff
City of Larkspur

Garry Lion
City of Mill Valley

Brad Wagenknecht
County of Napa

Denise Athas
City of Novato

Tom Butt
City of Richmond

Carla Small
Town of Ross

Ford Greene
Town of San Anselmo

Ray Withy
City of Sausalito

Emmett O'Donnell
Town of Tiburon

1 (888) 632-3674
mceCleanEnergy.org

781 Lincoln Ave., #320
San Rafael, CA 94901

**San Rafael Corporate Center, Boro Room
750 Lindero Street, San Rafael, CA 94901**

Agenda Page 2 of 2

10. Members & Staff Matters (Discussion)

11. Adjourn



Agenda material can be inspected in the Marin County Sheriff's lobby, located at 3501 Civic Center Drive, San Rafael, CA 94903. The meeting facilities are in accessible locations. If you are a person with a disability and require this document in an alternate format (example: Braille, Large Print, Audiotape, CD-ROM), you may request it by using the contact information below. If you require accommodation (example: ASL Interpreter, reader, note taker) to participate in any MCE program, service or activity, you may request an accommodation by calling (415) 464-6032 (voice) or 711 for the California Relay Service or by e-mail at djackson@mceCleanEnergy.org not less than **four work days** in advance of the event.

**MARIN CLEAN ENERGY
EXECUTIVE COMMITTEE MEETING
WEDNESDAY, AUGUST 20, 2014
9:00 A.M.
SAN RAFAEL CORPORATE CENTER, BORO ROOM
750 LINDARO STREET, SAN RAFAEL, CA 94901**

Roll Call

Present:

Damon Connolly, City of San Rafael, Chair
Tom Butt, City of Richmond
Kate Sears, County of Marin
Sloan Bailey, Town of Corte Madera
Bob McCaskill, City of Belvedere

Absent:

Denise Athas, City of Novato

Staff:

Dawn Weisz, Executive Officer
Jamie Tuckey, Communications Director
Emily Goodwin, Director of Internal Operations
Greg Morse, Business Analyst

Agenda Item #4 – Approval of 7.16.14 Minutes (Discussion/Action)

M/s Butt/McCaskill (passed 5-0) the approval of the 7.16.14 Executive Committee minutes. Director Athas was absent.

Agenda Item #5 – Monthly Budget Reporting Format (Discussion/Action)

M/s Bailey/McCaskill (passed 5-0) the revised monthly budget reporting format. Director Athas was absent.

Agenda Item #6 – Lease Agreement Options for MCE Office Space (Discussion/Action)

M/s Connolly/McCaskill (passed 5-0) the approval to bring the lease agreement for 700 Fifth Avenue to the September Board meeting for vote. Director Athas was absent.

Damon Connolly, Chair

ATTEST:

Dawn Weisz, Executive Officer



A Tradition of Stewardship
A Commitment to Service

<ACCOUNT HOLDER NAME>
<ADDRESS 1>
<ADDRESS 2>
<CITY><STATE><ZIP>

November 3, 2014

Your electric account(s) will be enrolled with MCE’s cheaper, greener power in February 2015—unless you choose to opt out.

Napa County Supervisors have voted to join MCE, a not-for-profit, community organization partnering with PG&E to provide your electric service. With our lower rates and cleaner energy, you can save on your monthly bill and do your part to clean up the environment!

We offer choices for 50-100% renewable energy from solar, wind, bioenergy, geothermal and hydroelectricity.

Aside from lower rates and cleaner energy, not much will change. PG&E will still handle electric delivery, maintain the power lines, read your meter, and send your monthly bill. MCE will source cleaner power, called electric generation. Your bill will include charges for both PG&E electric delivery and MCE electric generation. You will never be double-billed for your service because MCE’s generation charge will replace PG&E’s.

Here are the options you now have for your power supply, and how to make your choice!

Your Energy Choices

- 1 MCE’s Light Green 50% renewable energy
- 2 MCE’s Deep Green 100% renewable energy
A penny more per kilowatt-hour, or about \$4/month for the average home, gets you 100% renewable energy!
- 3 PG&E’s 22% renewable energy

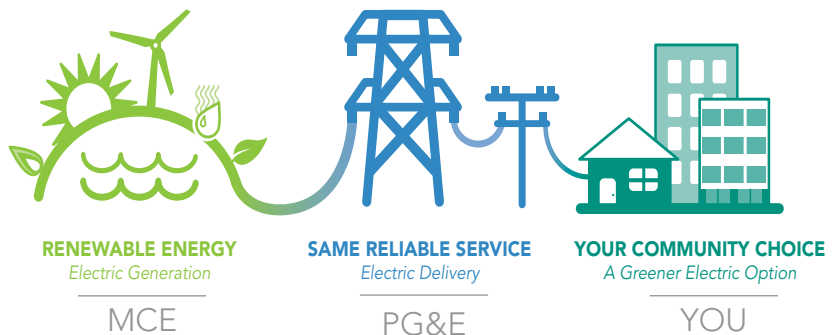
How to Make Your Choice

- Do nothing and your account will be enrolled in February 2015
- Enroll online or by phone
- Enroll online or by phone

It’s your choice and any of these is a simple phone call or website click away. **Call 1 (888) 632-3674 or visit www.mceCleanEnergy.org to opt out or sign up for Deep Green.** Please have your PG&E bill on hand to process your request.

Sincerely,

Dawn Weisz
MCE Executive Officer



MCE Terms and Conditions of Service

Rates

MCE electric generation rates are stable and affordable. Any changes to MCE rates will be adopted at duly noticed public MCE Board meetings. PG&E charges MCE customers a monthly Power Charge Indifference Adjustment (PCIA) and Franchise Fee Surcharge. These fees are always included in our cost comparisons. **View MCE rates and PG&E cost comparisons at www.mceCleanEnergy.org/rates or call 1 (888) 632-3674 for more information.**

Financial assistance programs like CARE (California Alternative Rates for Energy), FERA (Federal Electric Rate Assistance), and Medical Baseline Allowance remain the same with MCE. If you are enrolled in any of these programs with PG&E, you will continue to be enrolled if you choose MCE.

Billing

You will receive a single monthly bill from PG&E which will include MCE's electric generation charge. MCE's electric generation charge **replaces** PG&E's electric generation charge. **MCE's charge is not a duplicate charge or extra fee.** PG&E will continue to charge for electric delivery services. If you opt out of MCE, PG&E will begin charging you for electric generation.

Enrollment

As a not-for-profit, community-based organization, MCE is the primary electric generation provider in unincorporated Napa County, Marin County and the Cities of Richmond and San Pablo. California State Assembly Bill 117, passed and signed into law in 2002, requires that programs like MCE automatically enroll customers.

Your account will be enrolled with MCE's Light Green 50% renewable energy service on your regularly scheduled meter read date in February 2015. You may request to opt out at any time.

You may also choose Deep Green 100% renewable energy. To opt out, or to sign up for Deep Green, call 1 (888) 632-3674 or visit www.mceCleanEnergy.org. Please have your PG&E account information on hand to process your request.

Opt Out

You may request to opt out of MCE at any time by calling 1 (888) 632-3674 or by visiting www.mceCleanEnergy.org/opt-out. Please have your PG&E account information on hand to process your request.

If you do not opt out before MCE service starts or within 60 days after MCE service starts you will be subject to the payment of a one-time \$5 (residential) or \$25 (commercial) termination fee, will not have the option to return to MCE for one year, and will be subject to PG&E's terms and conditions of service. For information on PG&E's terms and conditions visit www.mceCleanEnergy.org/terms. You will not be charged a termination fee if you opt out before MCE service starts or within the first 60 days after your enrollment with MCE, or if you cancel electric service. Your opt out request must be received 5 business days prior to your account meter read date in order to switch service to PG&E before your next billing cycle begins. Your account will be transferred to PG&E on your meter read date and cannot be transferred during a billing cycle. You will be charged for all electricity procured by MCE on your behalf prior to the cancellation or transfer of electric service to PG&E.

Failure to Pay

MCE may transfer your account to PG&E upon 14 calendar days' written notice to you if you fail to pay your bill. If your service is transferred you will be required to pay the termination fee described above.

MCE is governed by a Board of Directors of elected officials from Marin County, Unincorporated Napa County, and the Cities of Richmond and San Pablo. We're committed to protecting customer privacy. Learn more at www.mceCleanEnergy.org/privacy.

<ACCOUNT HOLDER NAME>
<ADDRESS 1>
<ADDRESS 2>
<CITY><STATE>><ZIP>

Fecha

Bienvenido a MCE! Esperamos darle su servicio de generación eléctrica junto con PG&E!

MCE es un proveedor eléctrico de la comunidad, sin ánimo de lucro.

MCE ofrece opciones de energía 50% y 100% renovable proveniente de recursos como solar, eólica, bio energía, geotérmica e hidroeléctrica. .

MCE y PG&E se han asociado para ofrecer su servicio de electricidad.

Mientras que PG&E entrega la energía eléctrica, mantiene las líneas de energía, lee el medidor y envía su factura mensual, MCE provee la electricidad (Generación) y así PG&E ya no lo tiene que hacer.

MCE ofrece ahora tarifas más bajas que las de PG&E.

Las tarifas de descuento como CARE y Medical Baseline siguen lo mismo con MCE.

Gracias a MCE, ahora usted puede elegir de donde viene su energía, entre tres opciones diferentes:

- 1** **Como el proveedor de servicio de su comunidad, su(s) cuenta(s) de energía han sido inscrita(s) automáticamente a la energía 50% renovable, MCE Verde Claro.**
- 2** Puede optar por no participar en nuestro servicio de energía 100% renovable, MCE Verde Fuerte con tan solo un centavo adicional por kilovatio-hora, lo que llega a sumar solo \$5 adicionales al mes a residentes en general o \$13 a los negocios. La mitad de esa prima se invertirá en la construcción de nuevos proyectos de energía renovable locales.
- 3** Si no desea el servicio de MCE, puede optar por no participar y elegir PG&E como su proveedor de energía renovable del 22%.

Ud. elige, solo llámenos al 1 (888) 632-3674 o haciendo un simple clic en nuestro sitio web www.mceCleanEnergy.org. Tan simple como eso!

Sinceramente,



Dawn Weisz
MCE Executive Officer

Términos y Condiciones del Servicio de MCE

MCE está gobernado por una Junta de Directores de funcionarios elegidos por el Condado de Marin, incluyendo sus ciudades y pueblos y además por la Ciudad de Richmond. MCE está comprometido a proteger la privacidad de sus clientes. Obtenga más información en www.mceCleanEnergy.org/privacy.

Las Tarifas

Las tarifas de generación eléctrica de MCE son estables y asequibles. PG&E le cobra mensualmente a los clientes MCE una cantidad de Ajuste de Indiferencia (PCIA) y un Recargo de Franquicia. Estas tarifas ya están incluidas en nuestras comparaciones de costos. **Las podrá revisar en nuestro sitio web www.mceCleanEnergy.org/rates o llamando al 1 (888) 632-3674 para más información.**

Los Programas de asistencia financiera como CARE (Tarifas Alternativas de Energía de California), FERA (Tarifas de Asistencia de Electricidad Federal), y Medical Baseline (Concesión Médica Básica) siguen siendo los mismos para los clientes MCE. Si usted está actualmente inscrito en alguno de estos programas con PG&E, usted continuará inscrito automáticamente cuando elija MCE.

Cualquier cambio en las tasas de MCE se adoptarán y serán debidamente anotadas en las sesiones públicas de la Junta de MCE.

La Facturación

Usted recibirá una única factura mensual de PG&E, la cual incluirá la tarifa de generación eléctrica de MCE. Ese cobro de generación eléctrica de MCE **reemplaza** el cobro de generación eléctrica PG&E. **Ese cobro MCE ni se duplica ni es adicional. PG&E continuará cobrando los servicios de entrega de electricidad.** Si Ud. opta por salirse de MCE, PG&E será quien le cobre por la generación eléctrica.

Inscripción

Como organización sin ánimo de lucro basada en la comunidad, MCE es el proveedor de generación eléctrica automático en la Ciudad de Richmond y el condado de Marin. La ley de la Asamblea Estatal de California 117, aprobada y promulgada en el 2002, exige que los programas como MCE inscriban automáticamente a los clientes.

Su cuenta ha sido inscrita en el servicio de energía 50% renovable, MCE Verde Claro. Usted puede solicitar optar por salirse en cualquier momento. También puede optar por energía 100% renovable, MCE Verde Fuerte. Para optar por salirse o para inscribirse en Verde Fuerte, por favor llame al 1 (888) 632-3674 o visite www.mceCleanEnergy.org. Tenga a mano su información de PG&E para procesar su solicitud.

Optar por Salirse

Usted puede solicitar optar por salirse de MCE en cualquier momento llamando al 1 (888) 632-3674 o visitando www.mceCleanEnergy.org/opt-out.

Ud. tendrá un plazo de 60 días después del inicio del servicio con MCE para optar por salirse, de lo contrario deberá pagar una tarifa de cancelación única de \$ 25 (comercial) y de \$5 (residencial), no tendrá la opción de volver a MCE por un año, y estará sujeto a los términos y condiciones del servicio de PG&E. Para obtener información sobre los términos y condiciones de PG&E visite www.mceCleanEnergy.org/terms. No se le cobrará la tarifa de cancelación si opta dentro de los primeros 60 días después de su inscripción con MCE o si cancela el servicio eléctrico. Las cuentas serán transferidas a PG&E el día de la lectura eléctrica de su contador y no se puede transferir durante un ciclo de facturación. Para que su solicitud de exclusión voluntaria sea procesada en la siguiente fecha de lectura del contador, su solicitud debe ser recibida 5 días hábiles antes de la fecha de lectura del contador. Se le cobrará por la electricidad obtenida por MCE en su nombre antes de la cancelación o de la transferencia del servicio eléctrico a PG&E.

Falta de Pago

MCE puede transferir su cuenta a PG&E mediante notificación por escrito de 14 días, si usted no paga ninguna parte de los cobros de MCE en su factura. Si se transfiere el servicio, usted tendrá que pagar el cobro de cancelación descrito anteriormente.

From: Cherry, Brian K
Sent: 5/31/2010 9:29:59 PM
To: Bottorff, Thomas E (/O=PG&E/OU=CORPORATE/CN=RECIPIENTS/CN=TEB3)
Cc:
Bcc:
Subject: Re: Peevey

Also, he is opposed to Manzana. He said that he will not approve the project if the Fed's don't give us a permit. He said that the CA Fish and Game is ok with the project, but the Dept of the Interior needs to give their ok. Without it, he won't approve it.

----- Original Message -----

From: Cherry, Brian K
To: Bottorff, Thomas E
Sent: Mon May 31 21:27:43 2010
Subject: Peevey

Tom - Sara and I dinner with Mike last night. Carol had a political commitment in LA today and had to leave early so it was just the three of us and my daughter. The evening was social but we did delve into some work matters:

Oakley - Mike insisted again that he was putting Oakley last, to be filled in if some of the other projects don't get built. I told him again that if that was his intent, then the PD needed revision because it didn't approve, even conditionally, Oakley's MWs. He reiterated that wasn't true, but I told him he was mistaken and that we would come in and point out what needed to be corrected. Mike intimated that the Oakley problem would be addressed in the DWR Novation PD (second revision) but I told him that was risky. We needed changes to the LTTPP itself if we wanted to keep Oakley alive. Mike was fine with that and said he would look into it.

Mike mentioned that Steve Larson had scheduled a visit to talk to him about Oakley and that Steve had already met with Clanon. I let Mike know that the developers, not PG&E had hired him. I also told Mike that a successful outcome on Oakley was important to Steve for growing his business with Capital Strategies and Mike understood the implication of that very clearly. I told him that Steve and Chevron were going directly to Schwarzenegger to get Oakley approved and Mike needed to be aware of that. Mike was very dismissive of the Governor, calling him a lame duck. That said, he didn't tip his hand on the issue. Mike and Arnold and Steve are all close. We have our work cut out for us.

AB32 - Mike stated very clearly that he expects PG&E to step up big and early in opposition to the AB32 ballot initiative. He said it would undermine our reputation if we didn't fund it, especially given the hits we have taken lately over SmartMeter, Marin and Prop 16 activities. Mike said he told Peter we need to spend at least \$1 million. I asked for clarification and he said 'at least' doesn't mean \$1 million, it means a lot more. Mike said that we couldn't spend \$50 million on Prop 16 and then claim to be poor. He has approached Sempra and Edison and said we would have egg on our face if they came out in opposition to the initiative before we did. He said it would be a positive move that could help to repair fences with opponents of Prop 16.

Anniversary of PUC - at the end of January, the PUC is hosting a celebration of the Commission's 100th Anniversary. Mike has put together a Committee headed by Pete Arth, Steve Larson and Bill Bagley who are forming a 501.3c committee (under Mike's oversight). He expects PG&E, Sempra, Edison and AT&T to contribute \$100,000 each to the celebration committee (Edison and AT&T have already confirmed they will contribute). He said he mentioned it to Peter but wasn't sure if he had mentioned it to anyone else - but that I was on notice. The amount is steep because the Committee expects to spend \$150k or so and use the rest to fund other future Commission events that the State is unwilling to fund. For example, he mentioned he hosted 2 delegations from China recently and he had to fund the dinner for them out of his own pocket because the state is broke. At another event, John Bohn and Mike ponyed up \$3,500 out of their own pocket for a lunch. He doesn't want future Commissioners to face the same dilemma.

GRC - Mike is aware that we are looking for a good GRC decision. He said we have a decent judge who listens but that we couldn't expect to win everything. I suggested we could live with \$625 million and Mike chuckled a bit. I told him that we were concerned about restoring our infrastructure and Mike agreed, noting that TURN and DRA would ruin the industry if left to their own devices. He said to expect a decision in January - around the time of the PUC's 100th Anniversary celebration. I told him I got the message.

Prop 16 - Mike confirmed that he dropped a Commission resolution opposing Prop 16 because he couldn't get Simon on Board. He was quite pleased with his editorial against Prop 16 and the positive feedback he received on it to date. He said he told Peter he thinks Prop

16 will win but also said the Board should hold Peter personally responsible if it fails. Mike thinks win or lose we have sullied our reputation and that it will be a long haul to burnish our credentials again. Mike said he received a call from David Baker regarding PG&E and our recent downfall from PR grace. He said David was looking for dirt and wanted to write an article that would show that our duplicity between what we say and what we do, particularly the contrast between how we behave in Washington and how we behave in California in regards to being Green. However, Mike said he told Baker that PG&E was a leader in CA too and that despite our heavy-handedness in Marin and in SFO on CCA, that we were making major strides to green our business - more so than Edison and Sempra.

CCA - Mike reiterated his belief that our "low road" tactics were not only ineffective but beneath us and have caused more harm than good. He believes we need to simply compare services and take a more positive and proactive outreach. He believes the negative campaign that we have utilized has created the perception again that we are the bully on the block. Mike said he doesn't really support CCA, but it is the law. He believes that nascent CCAs will fail but campaigns like ours turn off even the greatest admirers of our company.

EE Incentives - Mike complained that Bohn has been ineffective in moving this matter quickly. He was hopeful that we would resolve the final true-up this year. He suggested that Peter have lunch or dinner with John and tell him to speed things up. Mike supports us getting incentives but told me not to expect too much given the large amounts we got the last two years. I suggested to Mike that the numbers were still subject to debate, but we could reach some agreement. I jokingly suggested that if he gave us \$26 million, we could come up with \$3 million or so for AB 32. He said that is a deal he could live with - but we both agreed lots of things above my pay grade have to happen before that is a reality.

Meeting with Peter - Mike wanted to know how the meeting between him and Peter was received. I told him the feedback I had heard was all good and that Peter appreciated meeting with him.

Summit - Mike wants to talk about the direction we are headed as a Company - what we support moving forward relative to renewable policy, CCA, the City and County of SFO and our communication strategy for getting back in the public's good graces.

All in all, we had a nice evening a polished off two bottles of good Pinot. Mike is in Sacramento tomorrow and doesn't get back to the Commission until Wednesday.

That's all.

Addendum for Data Manager Services

Reference:

**MASTER PROFESSIONAL SERVICES AGREEMENT
Between Noble Americas Energy Solutions LLC ("Noble")
And Marin Energy Authority ("MEA")
As of ("February 5, 2010")
Addendum Date: [February 8], 2013**

This Addendum (the "Addendum") supplements the Marin Energy Authority Master Professional Services Agreement referred to above (the "Agreement") and supersedes the previously executed Addendum for Data Manager Services for the Operational Period set forth below.

This Addendum ("Addendum") is made part of the Master Professional Services Agreement ("Master Agreement") referred to above.

1. **OPERATIONAL PERIOD** The Operational Period for the Addendum shall be from April 1, 2013 through Dec 31, 2017.

2. **DESCRIPTION OF DATA MANAGER SERVICES** During the Operational Period Noble shall provide the Data Manager Services listed below.

(a) **Electronic Data Exchange Services:**

- Process CCASRs from/to the LDC which specify the changes to a customer's choice of services such as enrollment in Marin Clean Energy ("MCE") Light Green or Deep Green service, On Bill Repayment (OBR) service, Balanced Payment Plan (BPP), customer initiated returns to bundled utility service or customer initiated returns to direct access service (814 Electronic Data Interchange Files).
- Obtain all customer usage data from the LDC's MDMA server to allow for timely billing (according to PG&E requirements) of each customer (867 Electronic Data Interchange Files).
- Maintain and communicate the amount to be billed by the LDC for services provided by MCE (810 Electronic Data Interchange Files).
- Receive and maintain all data related to payment transactions toward MCE charges from the LDC after payment is received by the LDC from customers (820 Electronic Data Interchange Files).
- Process CCASRs with PG&E when customer status changes.

(b) **Qualified Reporting Entity ("QRE") Services:**

- Consistent with terms and conditions included in the Qualified Reporting Entity Services Agreement(s) between MEA and Noble, serve as a QRE for certain locally situated, small-scale renewable generators supplying electric energy to MCE through its feed-in tariff ("FIT").
- Submit a monthly generation extract file to WREGIS on MCE's behalf, which will conform to the characteristics and data requirements set forth in the WREGIS Interface Control Document for Qualified Reporting Entities.
- For the purpose of collecting applicable generation and usage data for MCE FIT projects and consistent with the LDC's applicable meter servicing agreement, serve as designated "subcontractor" for certain FIT projects: Noble shall receive applicable electric meter data from the LDC and shall provide such data to MCE for purposes of performance tracking and invoice creation.

(c) **Customer Information System:**

- Maintain an accurate customer database of all customers who are offered MCE service and identify each customer's enrollment status, payment, collection status and correspondence with customer.
- Allow MCE to have functional access to the online database to add customer interactions and other account notes.
- Within eight months of contract date, allow MCE to view customer email or written letter correspondence within online database.
- Maintain and provide as needed historical usage data on all customers going back from start of service or no less than five years.

- Maintain viewing access, available to appropriate MEA staff, to view PG&E bills for MCE customers, including supporting the intuitive parsing and labeling of PG&E provided files.
- Process CCASR's with PG&E when customer status changes.
- Maintain and communicate as needed record of customers who have been offered service with MCE but have elected to opt out, either before or after starting service with MCE.
- Maintain and communicate as needed records of Net Energy Metering credits for customers to be posted on bill and settled annually.
- When requested by MCE, place OBR charges on the relevant customer account, identified by SAID.
- When requested by customer and approved by MCE, place BPP charges on the relevant customer account, identified by SAID.
- Identify customers participating in OBR and BPP programs in database.
- Include OBR and BPP payment information in all relevant reports.
- Perform quarterly BPP reviews to assess appropriate customer charge level.
- Maintain all customer data according to MCE's customer privacy policy and the requirements of relevant California Public Utilities Commission Decisions including D.12-08-045, including a daily backup process.
- Maintain NES Security Breach Policy.
- Provide master customer list weekly, via SFTP, for MCE importation to web portal.

(d) Customer Call Center:

- Staff a call center during any Statutory Enrollment Period 24 hours a day, 7 days a week.
- Staff a call center during non-enrollment period between the hours of 7 AM and 7 PM PPT Monday through Friday, excluding LDC holidays.
- Ensure sufficient number of Data Manager Experts (trained to Tier 3 level proficiency) are available to seamlessly manage escalated calls between the hours of 8 AM and 5 PM PPT Monday through Friday, excluding LDC holidays.
- Ensure that a minimum of 80% of all calls will be answered within 60 seconds during non-enrollment periods.
- Ensure a no greater than 10% abandon rate for all non-enrollment period calls.
- Record all inbound calls and make available to MEA staff upon request.
- Receive calls from MCE customers referred to Noble by the LDC and receive calls from MCE customers choosing to contact Noble directly without referral from the LDC.
- Provide a contact telephone number on the LDC invoice that would allow MCE customers to contact Noble directly.
- Collect and/or confirm current email, mailing address and phone number of customers and add to or update database during inbound call.
- Respond to telephone inquiries from MCE customers using a script developed and updated quarterly by MEA. For questions not addressed within the script, refer inquiries either back to the LDC or to MEA.
- Respond to customer inquiries within 24 hours, including inquiries received either through telephone calls, email, fax or web-portal.
- Offer bi-annual cross training to LDC call center.
- Ensure monthly status reports are provided during the first week of each month
- Ensure weekly status reports are provided during enrollment periods.
- Provide translation services for messaging and inbound calls for Spanish, Vietnamese, Mandarin, Cantonese, Tagalog and Laotian languages.

(e) Billing Administration:

- Maintain a table of rate schedules provided by MEA, including Deep Green and On-Bill Repayment (OBR) Charges.
- Send OBR as a separate line item to PG&E for placement on monthly bill during term of repayment. Apply LDC account usage for all MCE customers against applicable rate to allow for customer billing.
- Review application of MCE rates to LDC accounts to ensure that the proper rates are applied to the accounts.
- Timely submit billing information for each customer to the LDC to meet the LDC billing window.
- Use commercially reasonable efforts to remedy billing errors for any customer in a timely manner, no more than two billing cycles.

- Assist with annual settlement process for Net Energy Metering customers by identifying eligible customers, providing accrued charges and credits, and providing mailing list to MCE designated printer.
- Provide customer mailing list to MCE designated printer for new move-in customer notices and opt out confirmation letters routinely within 7 days of enrollment or opt out.
- Send an MCE provided letter to customers that are over 90 days and \$250 overdue. If no payment is received from the customer within 60 days of notice being sent, issue a CCASR to return customer to LDC.

(f) Reporting:

Report	Frequency	Delivery Method
Aging	Weekly, Monthly	SFTP
Call Center Stats	Weekly, Monthly	Email
Cash Receipts	Weekly, Monthly	SFTP
County Invoice Summary Reports	Monthly	SFTP
Days To Invoice	Weekly, Monthly	SFTP
Deep Green Opt Up with Address	Weekly, Monthly	SFTP
Fairfax UUT	Monthly	Email
Invoice Summary Report	Weekly, Monthly	SFTP
Invoice Summary Report - Mid Month	Monthly	SFTP
Monthly Transaction Summary	Monthly	Email
Opt Out with Rate Class	Weekly, Monthly	SFTP
Retroactive Returns	Monthly	Email
Sent to Collections	Monthly	Email
Snapshot	Weekly	SFTP
Snapshot with Addresses	Weekly	SFTP
Unbilled Usage	Monthly	SFTP
Full Volume Usage by Rate Class	Monthly	SFTP

(g) Settlement Quality Meter Data:

- Noble shall provide MCE or MCE's designated Load Serving Entity ("LSE") with Settlement Quality Meter Data ("SQMD") as required from LSE's by the CAISO.
- Upon MEA's request, Noble shall submit the SQMD directly to the CAISO on behalf of MCE or MCE's designated LSE.
- The parties shall work together and agree on an acceptable format for the SQMD.
- MEA agrees that Noble shall have no responsibility for any changes or penalties assessed by the CAISO associated with the SQMD under an indemnity or otherwise.
- Noble shall prepare the SQMD using the same level of care that Noble would use if preparing the SQMD for its own account as an LSE, however, Noble hereby disclaims in advance that any representation is made or intended that the SQMD is necessarily complete, or free from error.

4. FEES

- Monthly Fee. Each month during the Operational Period, MEA shall pay Noble a \$30,000 fee.
- Meter Fee. Each month during the Operational Period, MEA shall pay Noble \$1.50 for each MCE Customer meter enrolled in the CCA service.
- Cancellation Fee. The Parties agree that the condition set forth in Section 7(a) of the Agreement has been satisfied and therefore the Cancellation Fee described in Section 7(a) of the Agreement shall no longer be applicable.

5. PRICING ASSUMPTIONS

The Fees defined in Section 4 are based on service to 125,000 meters. The parties acknowledge that a "material change" in such quantities may cause Noble to incur higher marginal costs to perform its obligations under this Agreement. A "material change" shall be at least a 20% deviation from 125,000 meters served. In the event of material change in Contract Quantities, Noble may adjust the fees in Section 4 as necessary to cover the higher marginal costs.

The Fees defined in Section 4 include only the services and items expressly set forth in this Addendum. Unless otherwise agreed to by the Parties in an Addendum, the cost of any additional deliverables provided by NES to MEA shall be passed through directly to MEA without mark-up using a labor rate of \$150.00 per hour.

6. NOTICES

The notice addresses as set forth in Section 21 of the Agreement are updated as follows:

Contract Manager:	MCE; Attn.: Emily Goodwin
MCE Address:	781 Lincoln Ave., Suite 320
	San Rafael, CA 94901
Telephone No.:	(415) 464-6035

Notices shall be given to Contractor at the following address:

Contractor:	Noble Americas Energy Solutions; Attn: Drake Welch
Address:	401 West A Street, Suite 500
	San Diego, CA 92101
Telephone No.:	(619) 684-8039

7. DEFINITIONS

"CCA Service" means Community Choice Aggregation Service which permits cities, counties or a joint powers agency whose governing boards have elected to acquire their electric power needs, hereinafter referred to as Community Choice Aggregators (CCA), to provide electric services to utility end-use customers located within their service area(s) as set forth in California Public Utilities Code Section 366.2 and other Commission directives.

"CCA Service Request ("CCASR")" means requests in a form approved by MCE's Local Utility to change a CCA's customer or utility customer's choice of services which could include returning a CCA's customer to bundled utility service or direct access service.

"LDC" means the relevant electric utility such as Pacific Gas and Electric Company.

"Mass Enrollment" means the automatic enrollment of customers into a CCA program where new service is being offered for the first time to a group of eligible customers.

"Meter Data Management Agent (MDMA) Services" means reading the LDC's customers' meters, validating the meter reads, editing the meter reads if necessary and transferring the meter reading data to a server pursuant to MCE's LDC standards.

"Statutory Enrollment Period" means three months prior to a Mass Enrollment, the month in which the Mass Enrollment occurs, and the two months following Mass Enrollment. The Statutory Enrollment Period takes place over a six month period.

NOBLE AMERICAS ENERGY SOLUTIONS LLC

By:  _____

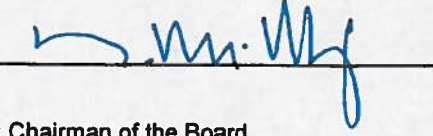
Title: **James M. Wood**
President

pr

MARIN ENERGY AUTHORITY

By:  _____

Title: Executive Officer

By:  _____

Title: Chairman of the Board



MARIN CLEAN ENERGY
700 5TH AVENUE
SAN RAFAEL, CA 94901

TENANT IMPROVEMENTS



351 California St. Suite 350 San Francisco Ca. 94104
phone: 415.537.9400 fax: 415.863.4209

**PRELIMINARY
NOT FOR CONSTRUCTION**

REV.	DESCRIPTION	DATE
1	ISSUE FOR PRICING	10.03.14

DEMOLITION PLAN

SCALE: AS NOTED
PROJECT NO: 13001.04
THIS SHEET IS 30" x 42"

A1.1

DEMOLITION NOTES

- (E) CONSTRUCTION: CONTRACTOR SHALL BE RESPONSIBLE FOR PROTECTING, PATCHING AND/OR REPAIRING ANY DAMAGE CAUSED BY HIM OR HIS SUBCONTRACTORS TO EXISTING CONSTRUCTION TO REMAIN. REFINISH TO MATCH EXISTING ADJACENT FINISHES OR AS NOTED HEREIN.
- (E) BUILDING LIFE-SAFETY SYSTEMS: NO EXISTING EGRESS LIGHT, EXIT SIGN, SMOKE DETECTOR, PUBLIC ADDRESS SPEAKER, FIRE ALARM BOX, OR SIMILAR DEVICE, INCLUDING THE ASSOCIATED WIRING, SHALL BE DAMAGED DURING DEMOLITION OR SUBSEQUENT CONSTRUCTION. U.O.N. NO ACTIVE SMOKE DETECTOR SHALL BE COVERED OR OTHERWISE REMOVED OR USED FOR OTHER THAN ITS INTENDED PURPOSE.
- (E) FIRE PROTECTION: ALL EXISTING SPRINKLER PIPES AND HEADS TO REMAIN, UNLESS OTHERWISE NOTED ON DESIGN/BUILD SPRINKLER PLANS.
- THE GENERAL CONTRACTOR SHALL FURNISH A SYSTEM OF TEMPORARY LIGHT AND POWER IN THE SPACE DURING CONSTRUCTION.
- STAIRWAYS MUST REMAIN ACCESSIBLE AT ALL TIMES DURING DEMOLITION.
- REMOVE AND CAP TO THEIR SOURCE ALL OUTLETS, SWITCHES, WIRES, THERMOSTATS, ETC. AS REQUIRED IN PARTITIONS TO BE REMOVED.
- REMOVE TO SOURCE ALL PIPES, VENTS, APPLIANCES, OR DRAINS NOT BEING RE-USED.
- REMOVAL OF ANY EQUIPMENT, CABLING SWITCHES, AND CONDUIT PERTAINING TO DATA/COMMUNICATIONS AND TELEPHONE SHALL BE VERIFIED WITH TELEPHONE COMPANIES, SERVICE OWNER, OR TENANT DATA/COMMUNICATIONS REPRESENTATIVE AS REQUIRED.
- DEMOLITION IS NOT NECESSARILY LIMITED TO WHAT IS SHOWN ON DRAWINGS. THE INTENT IS TO INDICATE THE GENERAL SCOPE OF DEMOLITION REQUIRED TO COMPLETE THE WORK IN ACCORDANCE WITH THE CONTRACT DRAWINGS.
- ALL EXISTING IRREGULAR MATERIALS WHICH CAUSE RISES IN FLOORING SURFACE, SUCH AS GULLE RESIDUE, FASTENERS, OLD CORES/COVER PLATES, PLYWOOD, ETC. FLOAT OUT ANY DEPRESSIONS IN SLAB AS REQUIRED FOR LEVEL SURFACE OVER 8'-0".

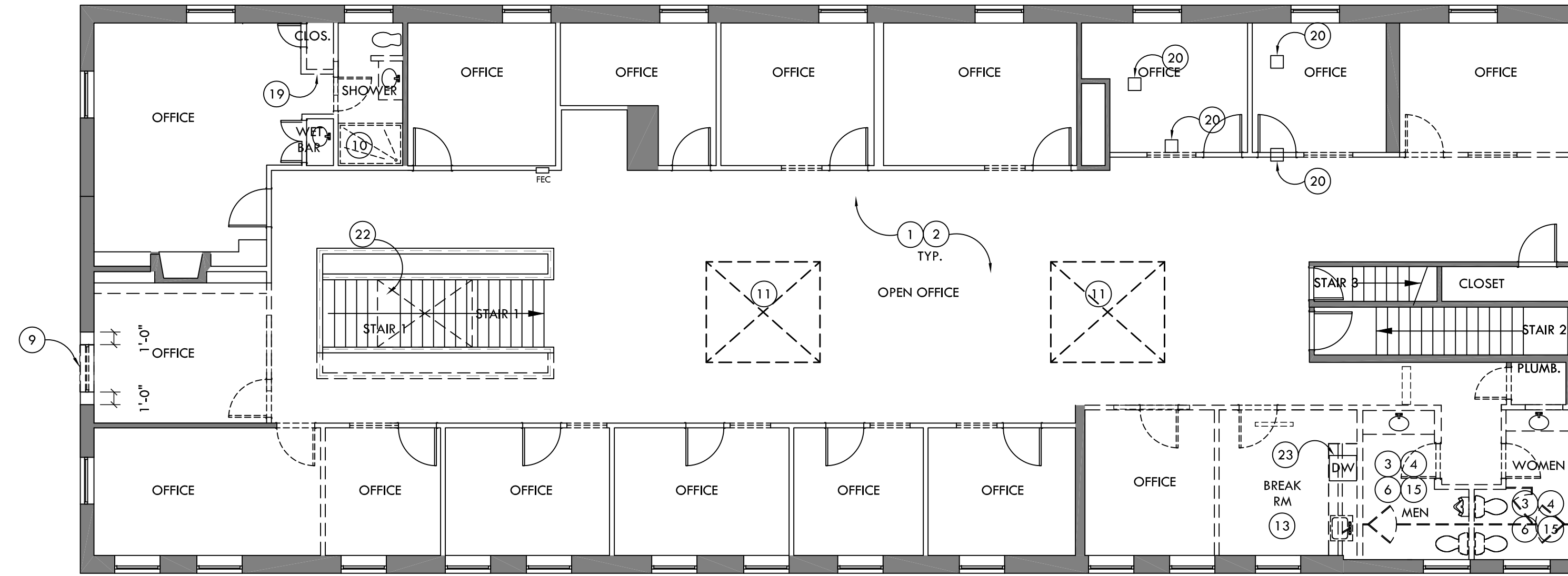
GRAPHIC LEGEND

WALL GRAPHIC KEY

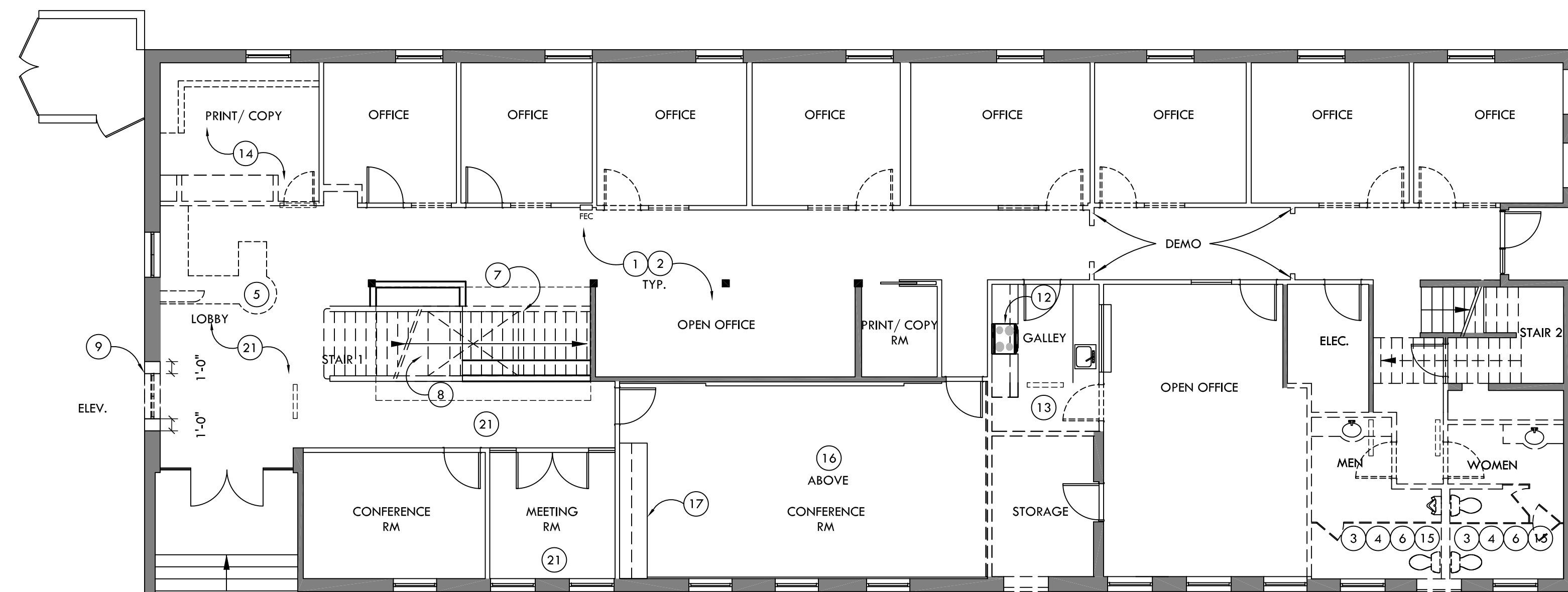
- TYPICAL OF EXISTING CORE & SHELL CONSTRUCTION TO REMAIN. NOTE THE GRAPHIC REPRESENTATION OF WALLS IN EXISTING AREAS THAT ARE NOT PART OF THIS PROJECT MAY VARY. THIS DATA MAY BE FROM OTHERS.
- TYPICAL OF EXISTING CONSTRUCTION TO REMAIN. NOTE THE GRAPHIC REPRESENTATION OF WALLS IN EXISTING AREAS THAT ARE NOT PART OF THIS PROJECT MAY VARY. THIS DATA MAY BE FROM OTHERS.
- TYPICAL OF WALLS AND DOORS TO BE REMOVED IF SHOWN ON THIS PLAN. CHECK PROJECT INDEX FOR DEMOLITION.

KEY NOTES

- DEMO (E) FLOOR FINISHES, WALL BASE, AND ADHESIVES THROUGHOUT AND PREP FOR NEW, TYP. U.O.N.
- DEMO (E) CEILING, LIGHTING, AND GRID THROUGHOUT, TYP. U.O.N. EXCEPT IN RR'S.
- DEMO (E) WALL AND FLOOR TILE THROUGHOUT RESTROOMS AND PREP FOR NEW, TYP. U.O.N.
- DEMO (E) PLUMBING FIXTURES THROUGHOUT. SALVAGE LAVS, TOILETS, AND WALL ACCESSORIES FOR REINSTALLATION.
- SAVE (E) RECEPTION DESK FOR POSSIBLE REUSE.
- DEMO (E) TOILET ROOM FINISHES, LIGHT FIXTURES AND STALL PARTITIONS. PREP FOR NEW.
- DEMO PARTIAL HT. WALLS OF STAIR, THIS SIDE.
- DEMO INTERMEDIATE STAIR LANDING, LOWER PORTION OF STAIR, HAND AND GUARD RAILS. EXPOSE (E) UPPER PORTION OF STAIR STRINGERS TO REMAIN.
- DEMO REQUIRED OPENING + 1'-0" PERIMETER OFFSET FROM NEW ELEVATOR DOOR JAMB AS REQUIRED PER MANUFACTURER'S INSTRUCTIONS. PREPARE FOR ELEVATOR JAMB AND THRESHOLD INSTALLATION.
- DEMO (E) SHOWER STALL. PREPARE FOR (N), SEE CONSTRUCTION PLAN 2/ A2.1.
- DEMO OPENINGS FOR (N) SKYLIGHTS.
- REMOVE (E) OVEN
- DEMO (E) BREAK ROOM MILLWORK UPPERS AND LOWERS, TYP. U.O.N.
- DEMO (E) STORAGE MILLWORK.
- DEMO RR LIGHTING. PATCH & PREP FOR (N) RECESSED CAN FIXTURES. SEE A3.1 FOR LAYOUT.
- (E) 3-STEPPED COFFERED CEILING TO BE EXTENDED. DEMO (E) PENDANT FIXTURES AND CANS.
- (E) CONF MILLWORK TO REMAIN, PROTECT.
- (E) WINDOW SHADES TO REMAIN, PROTECT. REPAIR, REPLACE T.M.E. AS NEEDED TYP.
- DEMO (E) SAFE. PATCH AND REPAIR OPENING TO FLUSH WALL SURFACE AS NEEDED.
- REMOVE (E) FLOOR BOX. PATCH FLOOR/ SUB FLOOR AS NEEDED.
- (E) SLATE FLOORING & BASE TO REMAIN, PROTECT EXCEPT AT LOCATION OF NEW LOBBY DIVISING. SEE A2.1 & A5.1 FOR MORE INFO.
- CUT BACK (E) SKYLIGHT SOFFIT TO (N) WALL HT. SEE 2/A3.1 FOR MORE DETAILS.
- (E) DISHWASHER TO REMAIN, RELOCATE FOR REUSE IN (N) MILLWORK CONFIGURATION.



2 DEMOLITION PLAN - FLOOR 2
SCALE: 1/8" = 1'-0"



1 DEMOLITION PLAN - FLOOR 1
SCALE: 1/8" = 1'-0"

Electronic Data Transfer Disclaimer: SENSEI (Weske associates) represents that various existing record documents and data sources created by others were used to assemble the DATA being transmitted. The RECIPIENT acknowledges that changes and modifications may have occurred to the referenced property or project that may make record documents inaccurate. The RECIPIENT further acknowledges that changes to computer documents are easy to do, difficult to detect, and that conversion, or the use of the DATA by others may introduce inaccuracies, errors or inaccuracies that may result in adverse consequences that the SENSEI can neither predict nor control. The RECIPIENT agrees to assume all risks associated with the use of the DATA provided, and understands that the SENSEI makes no claim or warranty as to the suitability of these drawings for any purpose. In consideration of receiving the DATA from the SENSEI, in machine-readable form, the RECIPIENT agrees, to the fullest extent permitted by law, to hold harmless and indemnify the SENSEI from and against all claims, liabilities, losses, damages, and costs, including but not limited to attorney's fees, arising out of, or in any way connected with, the use, re-use, misuse, modification, or misinterpretation of the machine-readable DATA provided by the SENSEI under this agreement. Agenda Item #8 - Draft 700 Fifth Ave. Design Plans

REV.	DESCRIPTION	DATE
------	-------------	------

1	ISSUE FOR PRICING	10.06.14
---	-------------------	----------

CONSTRUCTION NOTES

- PATCH AND FINISH DISTURBED AREAS TO MATCH ADJACENT MATERIALS AND FINISHES. REPAIR FIREPROOFING ON STRUCTURAL ELEMENTS. WHERE SLAB ON GRADE IS REMOVED REPLACE ALL SUBSTRATE MATERIALS.
- CLEANUP DAILY. CONTROL DUST AND DEBRIS. KEEP JOB SITE BROOM CLEAN AND FREE OF DEBRIS DAILY.
- MAINTAIN ALL BUILDING SYSTEMS AT ALL TIMES, INCLUDING LIFE SAFETY, FIRE PROTECTION, AND SECURITY SYSTEMS.
- REPORT ANY HAZARDOUS MATERIALS ENCOUNTERED TO THE OWNER/ARCHITECT.
- ADJACENT SPACES ARE OCCUPIED. DO NOT ALLOW ADHESIVE ODOR AND OTHER FUMES TO ENTER HVAC SYSTEM.
- PROVIDE PROTECTION FOR ALL EXISTING FINISHES IN THE SUITE AND IN THE PUBLIC CORRIDORS, AND REPAIR ANY DAMAGE THAT OCCURS.
- QUALITY OF WORK: ALL WORK SHALL BE PLUMB, SQUARE, LEVEL, TRUE, IN PROPER ALIGNMENT, AND SECURELY FASTENED.
- DIMENSIONS ARE FINISHED FACE TO FINISHED FACE, UNLESS OTHERWISE NOTED.
- DIMENSIONS SHALL BE EXACT WITHIN 1/8" IN 10'-0" LONG FULL HEIGHT AND LENGTH OF PARTITIONS. CONTRACTOR SHALL NOT ADJUST DIMENSIONS MARKED "CLEAR" OR "CLR" WITHOUT WRITTEN APPROVAL FROM THE ARCHITECT.
- CONCEALED WOOD TO BE FIRE TREATED.
- VERIFY PARTITION THICKNESS FOR INTERNAL INCLUSIONS SUCH AS PLUMBING, PANEL BOXES, TOILET ROOM ACCESSORIES, ETC.
- GLAZING SHALL CONFORM TO CHAPTER 24 OF CBC, 2010 EDITION.
- INSTALL TEMPERED GLASS WITH MANUFACTURER'S SEAL LOCATED AT A LOWER CORNER OF THE LITE. CONCEAL TONG MARKS IF ANY.
- SILICON SEALANT TO BE CLEAR, UNLESS OTHERWISE NOTED.
- PROVIDE SLIP JOINT AT TOP OF FULL HEIGHT PARTITIONS.
- GYP. BOARD TO BE 5/8" TYPE "X", UNLESS OTHERWISE NOTED. INSTALL GYP. BOARD WITH LONG DIMENSION PERPENDICULAR TO FRAMING.
- PROVIDE WATER RESISTANT GYP. BOARD AT TOILET ROOM PARTITIONS.
- ALL EXPOSED GYP. BOARD EDGES TO HAVE METAL EDGE TRIM.
- CEILING HEIGHT PARTITIONS SHALL BE INSTALLED TIGHT TO FINISHED CEILING, WITH NO JOINTS VARYING MORE THAN ±1/8" OVER 6'-0" AND NO JOINTS GREATER THAN 3/16", UNLESS OTHERWISE NOTED.
- GYP. BOARD SHALL CONFORM TO CHAPTER 25 OF CBC, 2010 EDITION.
- GYP. BOARD TO HAVE "LEVEL 4" FINISHED SURFACE READY TO RECEIVE SCHEDULED FINISH. WHERE DEEP TONE PAINT IS SCHEDULED, SKIM COAT, FULL SURFACE.
- PROVIDE RECESSED METAL CABINETS WITH FIRE EXTINGUISHERS AS INDICATED ON THE DRAWINGS AND AS REQUIRED BY OFFICIALS PER BUILDING STANDARD. ALL PORTIONS OF THE BUILDING SHALL BE WITHIN 75 FEET OF A FIRE EXTINGUISHER. THE MINIMUM SIZE OF THE EXTINGUISHER SHALL BE 2-A-10-B-C.
- THE CAVITY FOR ALL RECESSED METAL CABINETS IN 1-HOUR RATED PARTITIONS SHALL BE LINED WITH 5/8" TYPE "X" GYP. BD. TOP, BOTTOM, SIDES, AND BACK.
- MODIFICATIONS OF (E) CONSTRUCTION: OBTAIN APPROVAL FROM ARCHITECT PRIOR TO MODIFYING COLUMN FRAMING, RELOCATING PIPES, AND SIMILAR SYSTEMS AND ITEMS, ADJUSTING ANY AND ALL OTHER FIELD CONDITIONS REQUIRED TO FIT PLANS.
- BUILDING STANDARD BLINDS AT ALL EXTERIOR WINDOW/S TO REMAIN. PROTECT FROM CONSTRUCTION DAMAGE. RELOCATE TRACKS WHERE NECESSITATED BY NEW CONSTRUCTION.
- DOORS: TRIM THE BOTTOMS OF DOORS TO CLEAR THE TOP OF FINISHED FLOOR, AS APPLICABLE, BY 1/4" MINIMUM, UNLESS OTHERWISE NOTED. VERIFY SLAB CONDITIONS. TRIM EACH DOOR TO FIT CONDITION. WHERE RADICAL VARIATIONS IN FLOOR ELEVATION EXIST, DOORS SHALL BE ORDERED WITH BOTTOM STILE SIZED TO ACCOMMODATE THESE UNDERCUT CONDITIONS.
- EGRESS DOORS SHALL BE READILY OPENABLE FROM THE EGRESS SIDE WITHOUT THE USE OF A KEY, TRIMB TURN, OR ANY SPECIAL KNOWLEDGE OR EFFORT. MANUALLY OPERATED FLUSH BOLTS OR SURFACE BOLTS ARE NOT PERMITTED.

GRAPHIC LEGEND

WALL GRAPHIC KEY

- TYPICAL OF EXISTING CORE & SHELL CONSTRUCTION TO REMAIN. NOTE: THE GRAPHIC REPRESENTATION OF WALLS IN EXISTING AREAS THAT ARE NOT PART OF THIS PROJECT MAY VARY. THIS DATA MAY BE FROM OTHERS.
- TYPICAL OF EXISTING CONSTRUCTION TO REMAIN. NOTE: THE GRAPHIC REPRESENTATION OF WALLS IN EXISTING AREAS THAT ARE NOT PART OF THIS PROJECT MAY VARY. THIS DATA MAY BE FROM OTHERS.
- TYPICAL OF WALLS AND DOORS TO BE REMOVED IF SHOWN ON THIS PLAN. CHECK PROJECT INDEX FOR DEMOLITION.
- TYPICAL OF NEW CEILING HEIGHT AND NEW FULL HEIGHT WALLS; SEE DESIGNATED WALL TYPE DETAIL FOR CONSTRUCTION.
- TYPICAL OF NEW ONE HOUR AND NEW TWO HOUR RATED WALLS; SEE DESIGNATED WALL TYPE DETAIL FOR CONSTRUCTION.
- TYPICAL OF NEW WINDOWS AND NEW WINDOW WALLS; SEE WINDOW SCHEDULE FOR LAYOUT AND CONSTRUCTION.
- TYPICAL OF NEW DOORS; SEE DOOR SCHEDULE FOR LAYOUT, CONSTRUCTION, AND HARDWARE.

WALL TYPE DETAILS

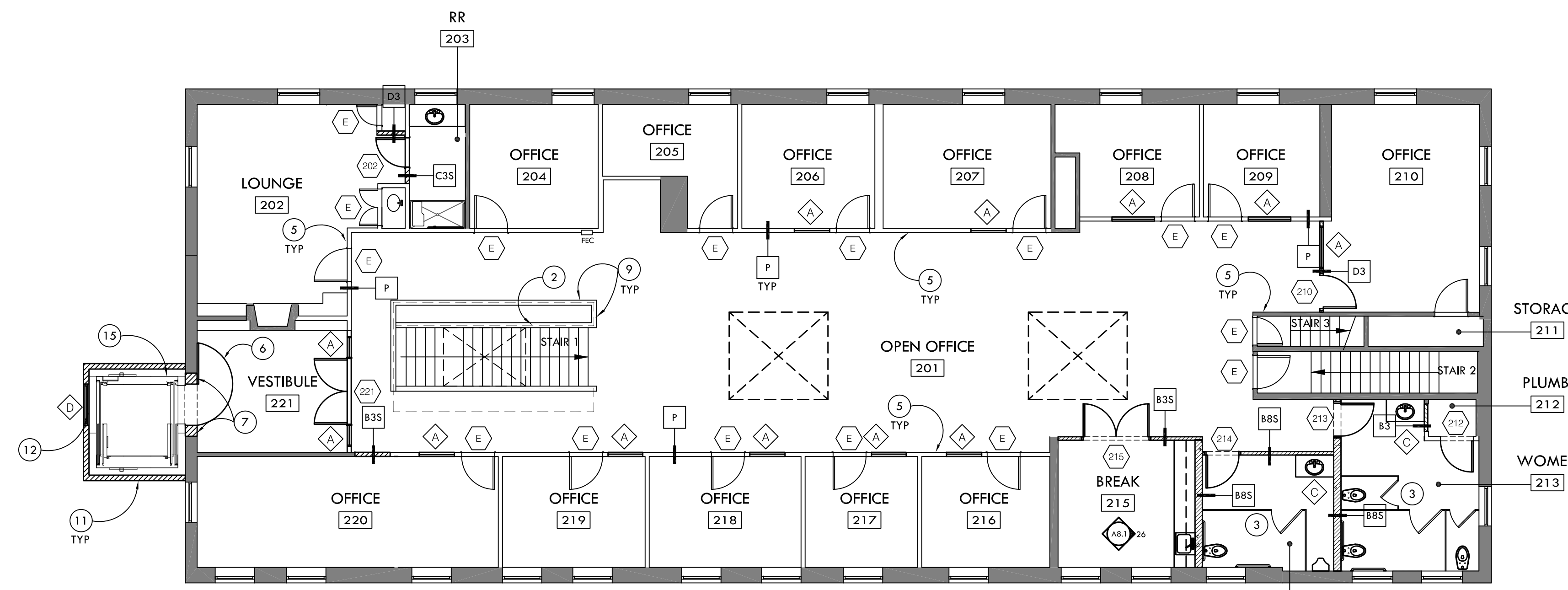
- SEE SHEET A9.1 FOR SPECIFIC WALL TYPE DETAILS

WALL TYPE TAGS

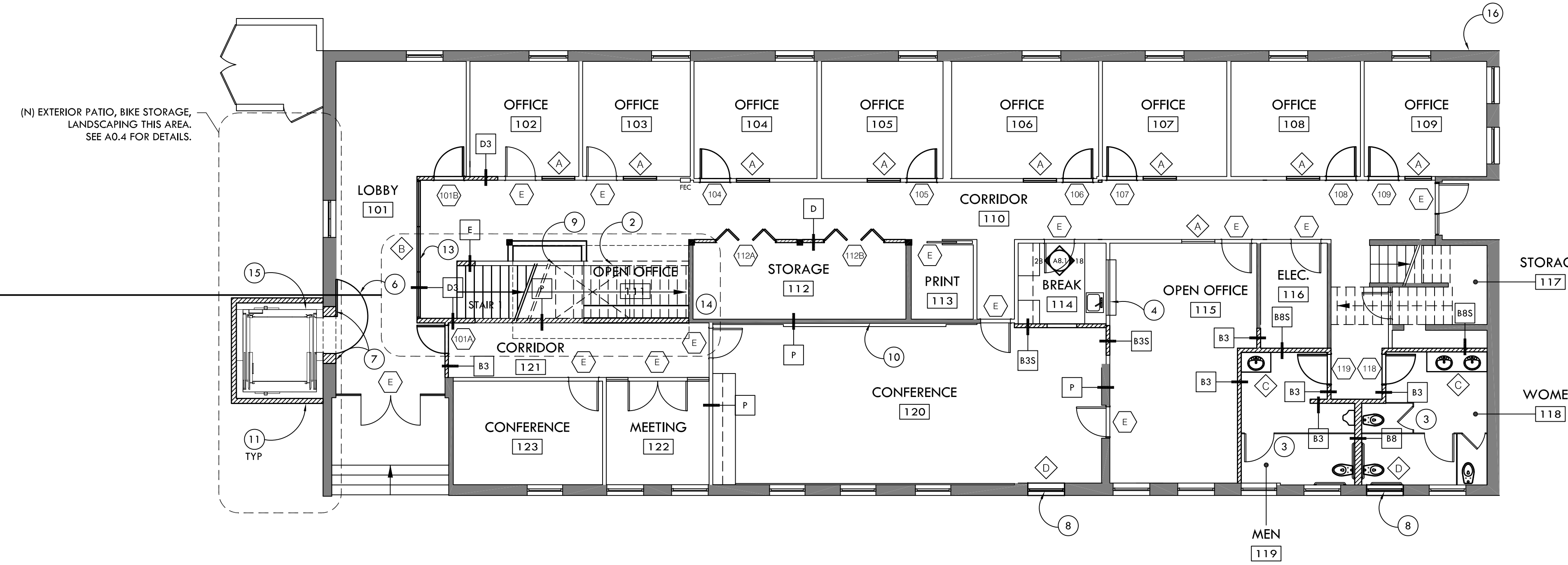
- FULL HT. 2-HOUR RATED PARTITION: SEE DETAIL ___ / A9.1
- FULL HT. 1-HOUR RATED PARTITION: SEE DETAIL ___ / A9.1
- SOUND ATTENUATED PARTITION TO 6" ABOVE CEILING HT. SEE DETAIL ___ / A9.1
- FURRED PARTITION: SEE DETAIL ___ / A9.1
- FULL HT. PARTITION: SEE DETAIL ___ / A9.1
- FULL HT. SOUND ATTENUATED PARTITION: SEE DETAIL ___ / A9.1
- FULL HT. 1-HOUR RATED PARTITION: SEE DETAIL ___ / A9.1
- FURRED SOUND ATTENUATED PARTITION: SEE DETAIL ___ / A9.1
- CEILING HT. PARTITION: SEE DETAIL ___ / A9.1
- CEILING HT. SOUND ATTENUATED PARTITION: SEE DETAIL ___ / A9.1
- LOW HEIGHT PARTITION: SEE DETAIL ___ / A9.1
- PONY WALL PARTITION: SEE DETAIL ___ / A9.1

WINDOW TYPES

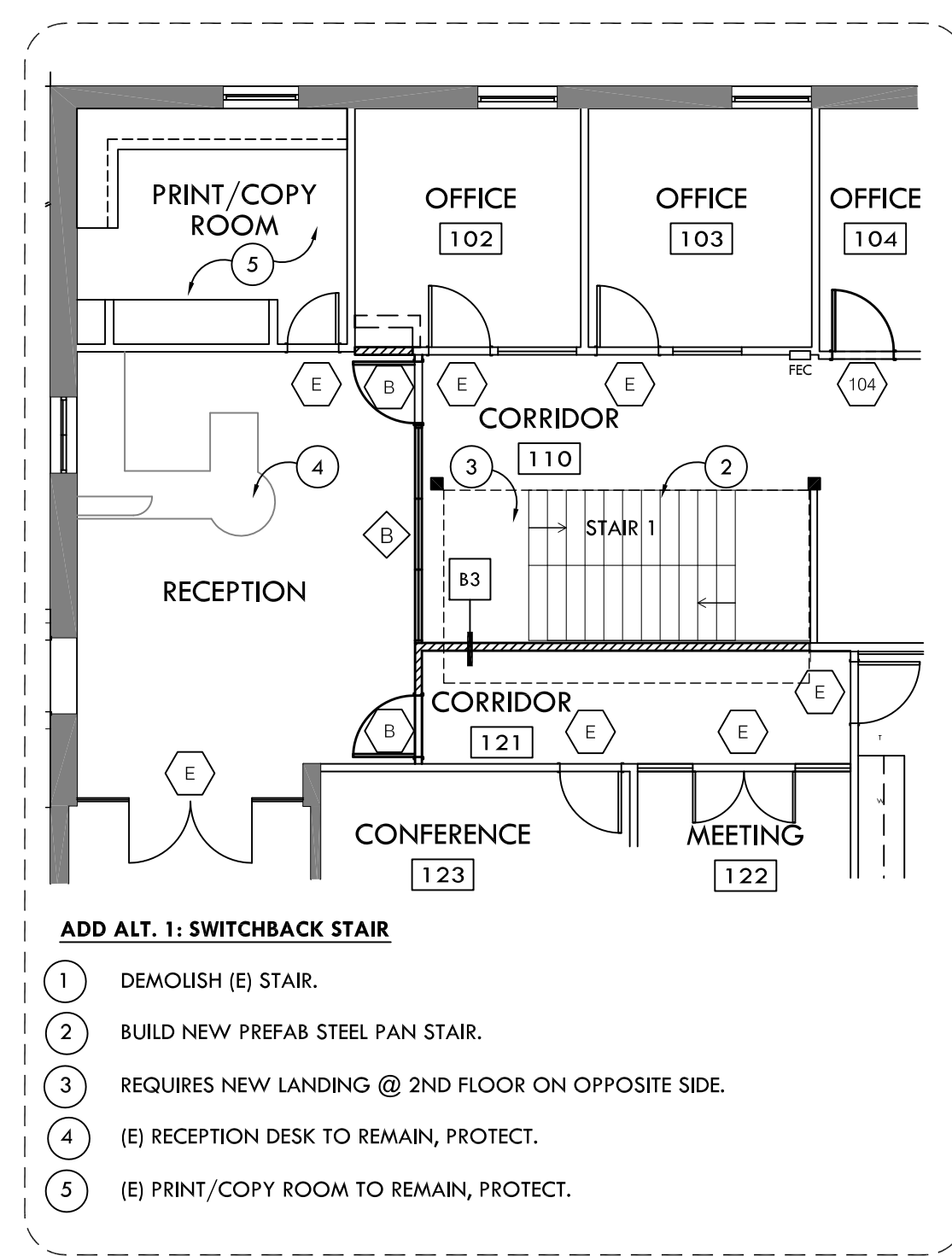
- BORROWED LITE @ DOOR HEIGHT. SEE DOOR TYPE C ELEVATION. TEMPERED GLAZING W/ FRAME T.A.E.
- FULL HEIGHT TEMPERED GLAZING STOREFRONT WITH ALUMINUM FRAME
- RESTROOM MIRROR ABOVE COUNTER TO CLG. HT.
- EXTERIOR GLAZING T.A.E.



2 CONSTRUCTION PLAN - FLOOR 2
SCALE: 1/8" = 1'-0"



1 CONSTRUCTION PLAN - FLOOR 1
SCALE: 1/8" = 1'-0"

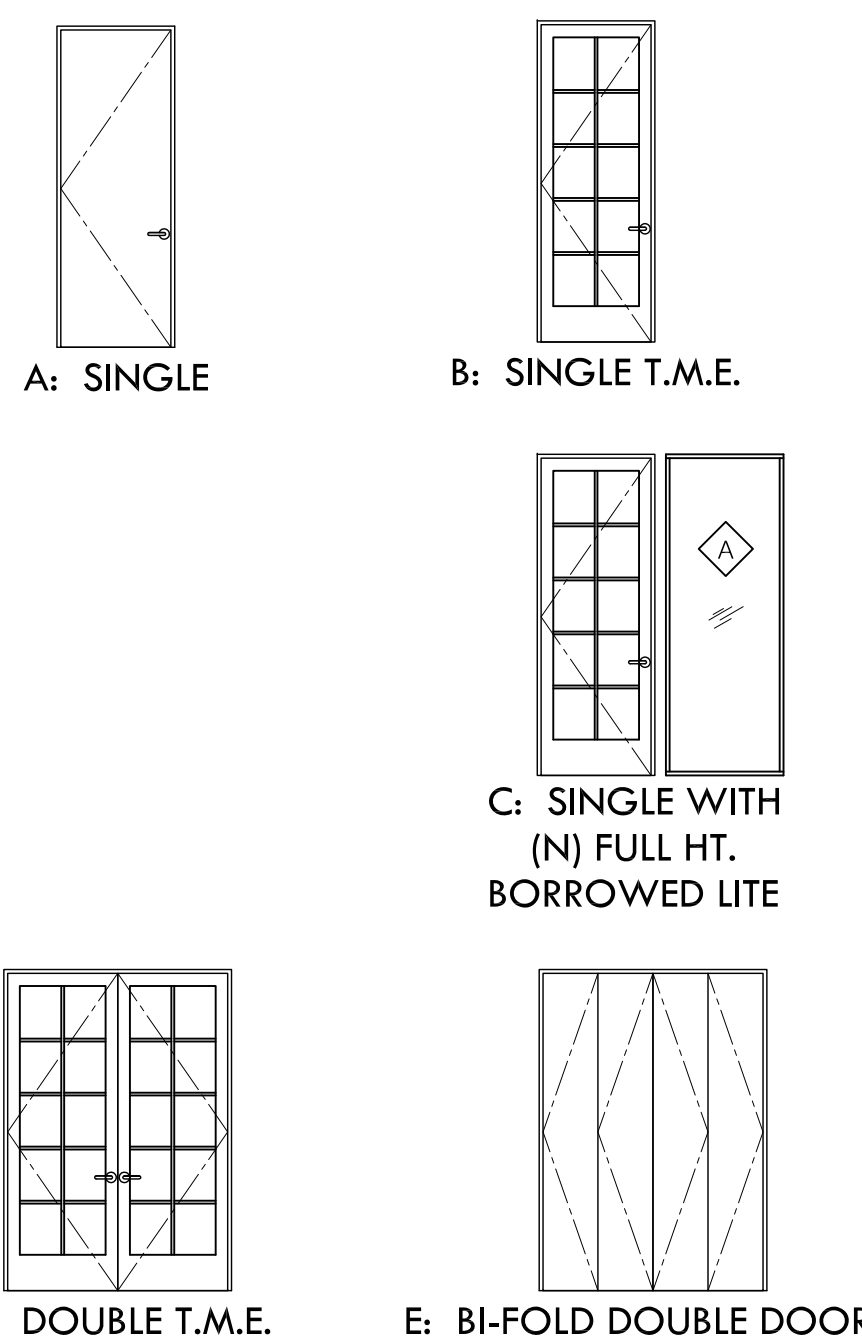


1A ALTERNATE STAIR PLAN LAYOUT
SCALE: 1/8" = 1'-0"

KEY NOTES

- PATCH, REPAIR, PAINT WALL DAMAGE FROM ABANDONED DEVICES AND J-BOXES. TYP. THROUGHOUT BOTH FLOORS. U.O.N.
- FINISH EXPOSED STAIR STRINGERS.
- (N) FULL HT. TOILET PARTITIONS, TYP. U.O.N. SEE A5.1 FOR MORE DETAILS.
- (N) SERVICE WINDOW.
- ALL (E) INTERIOR FACING WALLS SURROUNDING OPEN OFFICE AND MAIN CONFERENCE ROOM TO BE PONY WALLS TO UNDERSIDE OF DECK. SEE P3 DETAILS ON A9.1.
- (N) 180 SWING FIRE SHUTTER DOOR @ ELEVATOR DOOR OPENING
- REBUILD EXTERIOR WALL T.A.E. WHERE CUT BACK FOR ELEVATOR INSTALLATION.
- CONVERT (E) INFILLED WINDOW TO BUILDING STANDARD. ALL WINDOW SPECS T.A.E.
- (N) CABLE GUARD RAIL AT FLOOR PERIMETER. CABLE GUARD AND HAND RAILS AT OPEN WEST SIDE OF STAIR. SEE DETAILS 15, 20, 26, 28, 30 ON A9.3.
- ADD BACKING IN WALL @ 60" A.F.F. FOR 2 (N) TENANT PROVIDED TV'S.
- BUILD EXTERIOR SHELL WALLS OF ELEVATOR SHAFT T.A.E. SEE ELEVATION 2/A8.2 FOR DETAILS.
- (N) EXTERIOR WINDOW T.A.E. BUILDING STANDARD SPECS.
- ADD ALT #2: REUSE (E) M.C.E. TENANT SPACE ALUMINUM FRAMES & GLAZING**
- LOCATION OF REMOTE ELEVATOR HOISTWAY CLOSET. COORDINATE W/ KONE ELEV.
- SEE STRUCTURAL DESIGN SPEC & MFR. CUT SHEETS FOR ELEVATOR DETAILS.
- PROPOSED LOCATION OF (N) FIRE RISER ON EXTERIOR

DOOR TYPES



HARDWARE GROUPS

- GROUP 1: OFFICE LOCKSET (SINGLE DOOR)**
- 1 ADA COMPLIANT LEVER HANDLE TO MATCH (E) BLDG. STD.
 - 1 CYLINDER LOCKSET TO MATCH (E) BLDG. STD.
 - 2 PAIR BUTT HINGES TO MATCH (E) BLDG. STD.
 - 1 DOOR STOP TO MATCH (E) BLDG. STD.
- GROUP 2: LATCHSET (SINGLE DOOR)**
- 1 ADA COMPLIANT LEVER HANDLE TO MATCH (E) BLDG. STD.
 - 1 CYLINDER LATCHSET TO MATCH (E) BLDG. STD.
 - 2 PAIR BUTT HINGES TO MATCH (E) BLDG. STD.
 - 1 DOOR STOP TO MATCH (E) BLDG. STD.
- GROUP 3: LOCKSET WITH CARD READER (SINGLE DOOR)**
- 1 ADA COMPLIANT LEVER HANDLE TO MATCH (E) BLDG. STD.
 - 1 CYLINDER LOCKSET TO MATCH (E) BLDG. STD.
 - 1 1/2 PAIR BUTT HINGES TO MATCH (E) BLDG. STD.
 - 1 CARD READER TO MATCH (E) BLDG. STD.
 - 1 DOOR STOP TO MATCH (E) BLDG. STD.
 - 1 CLOSER
- GROUP 4: LATCHSET (DOUBLE DOOR)**
- 1 ADA COMPLIANT LEVER HANDLE TO MATCH (E) BLDG. STD.
 - 1 CYLINDER LATCHSET TO MATCH (E) BLDG. STD.
 - 4 PAIR BUTT HINGES TO MATCH (E) BLDG. STD.
 - 2 DOOR STOP TO MATCH (E) BLDG. STD.
 - 2 DUSTPROOF STRIKE TO MATCH (E) BLDG. STD.
- GROUP 5: OFFICE LATCHSET (DOUBLE DOORS)**
- 1 ADA COMPLIANT LEVER HANDLE TO MATCH BLDG. STD.
 - 1 CYLINDER LOCKSET TO MATCH (E) BLDG. STD.
 - 4 PAIR BUTT HINGES TO MATCH (E) BLDG. STD.
 - 2 DOOR STOP TO MATCH (E) BLDG. STD.
 - 1 DUSTPROOF STRIKE TO MATCH (E) BLDG. STD.
 - 1 FLUSHBOLT TO MATCH (E) BLDG. STD.
 - 1 COORDINATOR TO MATCH (E) BLDG. STD.
 - 1 ASTRAGAL TO MATCH (E) BLDG. STD.
 - 1 CARD READER TO MATCH (E) BLDG. STD.
- GROUP 6: STORAGE LOCKSET (DOUBLE DOOR)**
- 1 ADA COMPLIANT LEVER HANDLE TO MATCH (E) BLDG. STD.
 - 1 CYLINDER LOCKSET TO MATCH (E) BLDG. STD.
 - 4 PAIR BUTT HINGES TO MATCH (E) BLDG. STD.
 - 1 MANUAL FLUSHBOLT TO MATCH (E) BLDG. STD.
 - 1 DUSTPROOF STRIKE TO MATCH (E) BLDG. STD.

DOOR SCHEDULE

MARK	SIZE WXH	DOOR TYPE	FRAME TYPE	HARDWARE	RATING	HEAD	JAMB	SILL	NOTES
101A	6'-8"x3'-0"	B	T.M.E.	3		T.M.E.	T.M.E.	T.M.E.	ALL HW TO BE BRUSHED S.S. FINISH EXCEPT (E) BRASS HINGES TO REMAIN, REUSE, TYP.
101B	6'-8"x3'-0"	B	T.M.E.	3		T.M.E.	T.M.E.	T.M.E.	ALL HW TO BE BRUSHED STAINLESS FINISH EXCEPT (E) BRASS HINGES TO REMAIN, REUSE, TYP.
104	6'-8"x3'-0"	C	T.M.E.	1		T.M.E.	T.M.E.	T.M.E.	ALL HW TO BE BRUSHED STAINLESS FINISH EXCEPT (E) BRASS HINGES TO REMAIN, REUSE, TYP.
105	6'-8"x3'-0"	C	T.M.E.	1		T.M.E.	T.M.E.	T.M.E.	ALL HARDWARE TO BE BRUSHED STAINLESS FINISH
106	6'-8"x3'-0"	C	T.M.E.	1		T.M.E.	T.M.E.	T.M.E.	ALL HW TO BE BRUSHED STAINLESS FINISH EXCEPT (E) BRASS HINGES TO REMAIN, REUSE, TYP.
107	6'-8"x3'-0"	C	T.M.E.	1		T.M.E.	T.M.E.	T.M.E.	ALL HARDWARE TO BE BRUSHED STAINLESS FINISH
108	6'-8"x3'-0"	C	T.M.E.	1		T.M.E.	T.M.E.	T.M.E.	ALL HARDWARE TO BE BRUSHED STAINLESS FINISH
109	6'-8"x3'-0"	C	T.M.E.	1		T.M.E.	T.M.E.	T.M.E.	ALL HARDWARE TO BE BRUSHED STAINLESS FINISH
112A	6'-8"x6'-0"	E	T.M.E.	6		T.M.E.	T.M.E.	T.M.E.	ALL HARDWARE TO BE BRUSHED STAINLESS FINISH
112B	6'-8"x6'-0"	E	T.M.E.	6		T.M.E.	T.M.E.	T.M.E.	ALL HARDWARE TO BE BRUSHED STAINLESS FINISH
118	6'-8"x3'-0"	A	T.M.E.	2		T.M.E.	T.M.E.	T.M.E.	ALL HARDWARE TO BE BRUSHED STAINLESS FINISH
119	6'-8"x3'-0"	A	T.M.E.	2		T.M.E.	T.M.E.	T.M.E.	ALL HARDWARE TO BE BRUSHED STAINLESS FINISH
202	6'-8"x3'-0"	A	T.M.E.	2		T.M.E.	T.M.E.	T.M.E.	ALL HARDWARE TO BE BRUSHED STAINLESS FINISH
210	6'-8"x3'-0"	C	T.M.E.	1		T.M.E.	T.M.E.	T.M.E.	ALL HARDWARE TO BE BRUSHED STAINLESS FINISH
213	6'-8"x3'-0"	A	T.M.E.	2		T.M.E.	T.M.E.	T.M.E.	ALL HARDWARE TO BE BRUSHED STAINLESS FINISH
214	6'-8"x3'-0"	A	T.M.E.	2		T.M.E.	T.M.E.	T.M.E.	ALL HARDWARE TO BE BRUSHED STAINLESS FINISH
215	6'-8"x6'-0"	D	T.M.E.	4		T.M.E.	T.M.E.	T.M.E.	ALL HARDWARE TO BE BRUSHED STAINLESS FINISH
221	6'-8"x6'-0"	D	T.M.E.	5		T.M.E.	T.M.E.	T.M.E.	ALL HARDWARE TO BE BRUSHED STAINLESS FINISH
E	N/A	N/A	N/A	T.M.E. FUNCTION		N/A	N/A	N/A	ALL DOOR HANDLES TO BE REPLACED WITH BRUSHED S.S. LEVERS.

DOOR AND FRAME NOTES

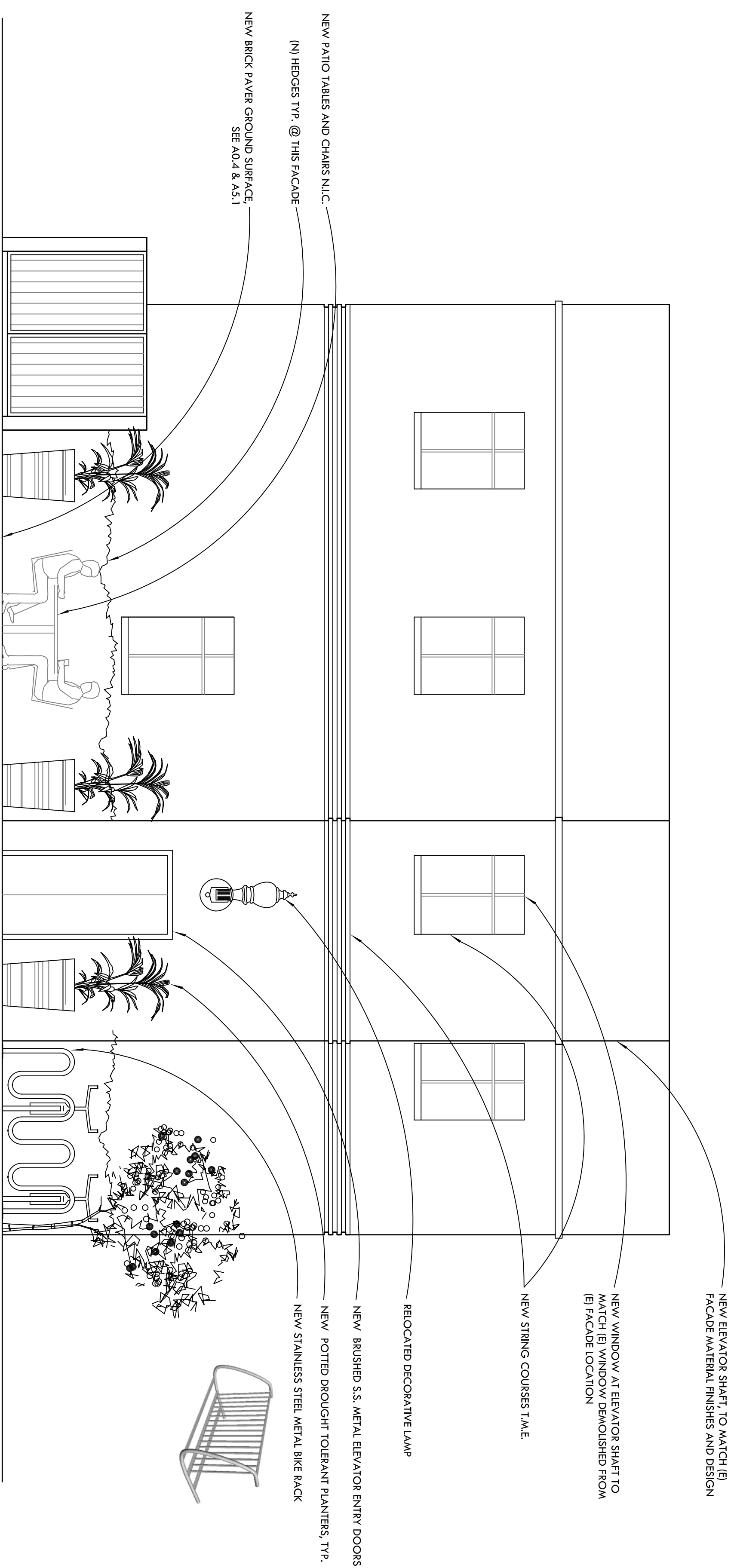
- ALL DOOR, FRAME & WINDOW HEIGHTS ARE TO MATCH EXISTING.
- ALL NEW DOOR FRAMES, HARDWARE AND MISC. METAL FINISHES ARE TO MATCH EXISTING BLDG. STD.
- ALL NEW DOORS ARE TO MATCH EXISTING WOOD TYPE, GRAIN, COLOR AND FINISH.
- ALL GLASS TO BE 3/8" CLEAR VISION TEMPERED GLASS (T), U.O.N.
- ALL EXISTING DOORS ARE TO BE SPOT REFINISHED AS REQUIRED TO PROVIDE LIKE-NEW CONDITION.
- REFER TO SHEET 21/A9.3 FOR TYPICAL MOUNTING HEIGHT REQUIREMENT.

SENEGER (Weske Karr) represents the various existing record documents and data sources created by others used to assemble the DATA being transmitted. The RECIPIENT acknowledges that changes and modifications may be made to the referenced property or project that may make record documents inaccurate. The RECIPIENT further acknowledges that changes to computer documents are easy to do, difficult to detect, and that conversion, or the use of the DATA by others may introduce anomalies, errors or inaccuracies that may result in adverse consequences that the SENEGER can neither predict nor control. The RECIPIENT agrees to assume all risks associated with the use of the DATA provided, and understands that the SENEGER makes no claim or warranty as to the suitability of these drawings for any purpose. SENEGER, (Weske Karr) does not warrant, defend, or hold harmless or indemnify the SENEGER from and against all claims, liabilities, losses, damages, and costs, including but not limited to attorney's fees, arising out of or in any way connected with, the use, re-use, misuse, modification, or misinterpretation of the machine-readable DATA provided by the SENEGER under this agreement. In consideration of receiving the DATA from the SENEGER, the RECIPIENT agrees, to the fullest extent permitted by law, to hold harmless and indemnify the SENEGER from and against all claims, liabilities, losses, damages, and costs, including but not limited to attorney's fees, arising out of or in any way connected with, the use, re-use, misuse, modification, or misinterpretation of the machine-readable DATA provided by the SENEGER under this agreement.

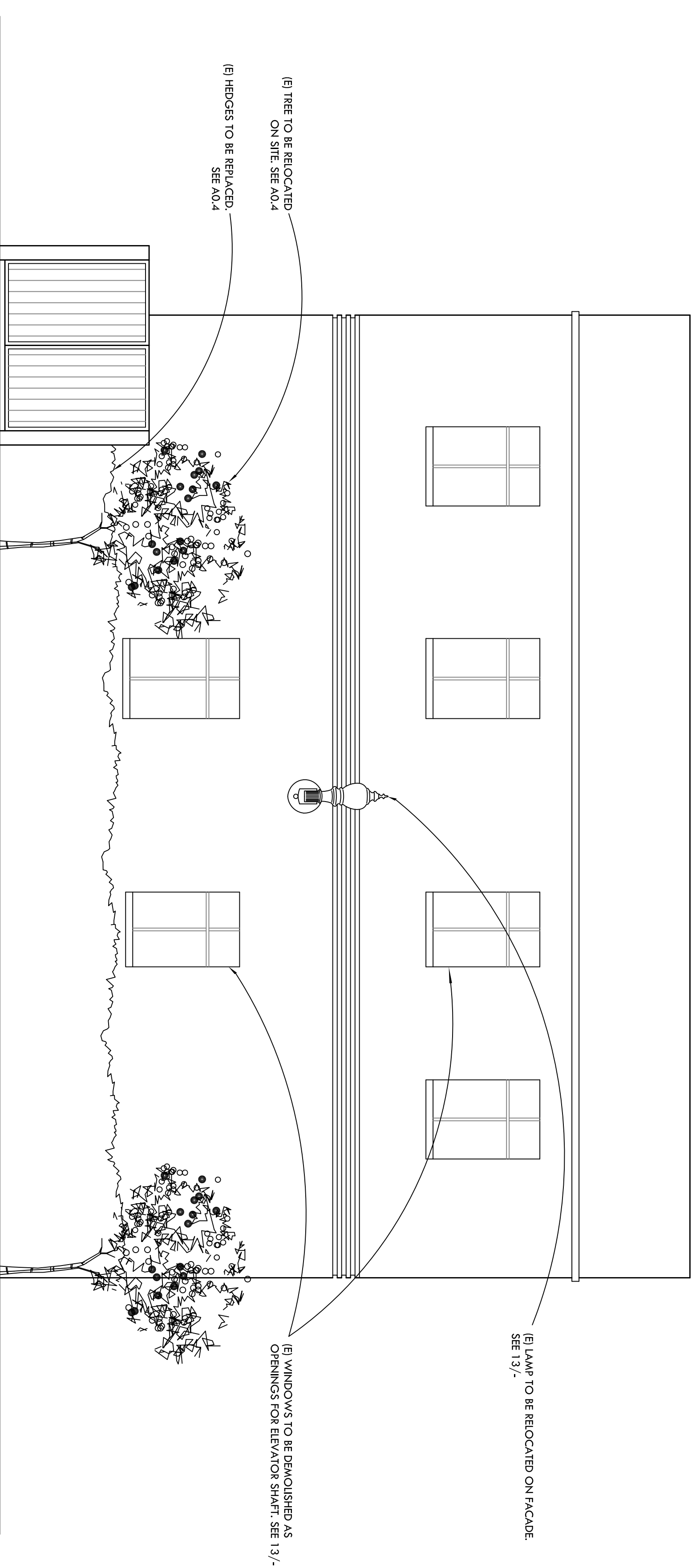
Agenda Item #8 - Draft 700 Fifth Ave. Design Plans

Electronic Data Transfer Disclaimer

SENDER (Weske associates) represents that various existing record documents and data sources created by others were used to assemble the DATA being transmitted. The RECIPIENT acknowledges that changes and modifications may have occurred to the referenced property or project that may make record documents inaccurate. The RECIPIENT further acknowledges that changes to computer documents are easy to do, difficult to detect, and that conversion, or the use of the DATA by others may introduce anomalies, errors or inaccuracies that may result in adverse consequences that the SENDER can neither predict nor control. The RECIPIENT agrees to assume all risks associated with the use of the DATA provided, and understands that the SENDER makes no claim or warranty as to the suitability of these drawings for any purpose. In consideration of receiving the DATA from the SENDER, in machine-readable form, the RECIPIENT agrees, to the fullest extent permitted by law, to hold harmless and indemnify the SENDER from and against all claims, liabilities, losses, damages, and costs, including but not limited to attorney's fees, arising out of, or in any way connected with, the use, re-use, misuse, modification, or misinterpretation of the machine-readable DATA provided by the SENDER under this agreement.



13 SOUTH ELEVATION - NEW
1/7" = 1'-0"



11 SOUTH ELEVATION - EXISTING
1/7" = 1'-0"



MARIN CLEAN ENERGY
700 5TH AVENUE
SAN RAFAEL, CA 94901

**TENANT
IMPROVEMENTS**



361 Redwood Road, Suite 300, Redwood City, CA 94061
Phone: 415.327.9200 Fax: 415.863.4209

**PRELIMINARY
NOT FOR CONSTRUCTION**

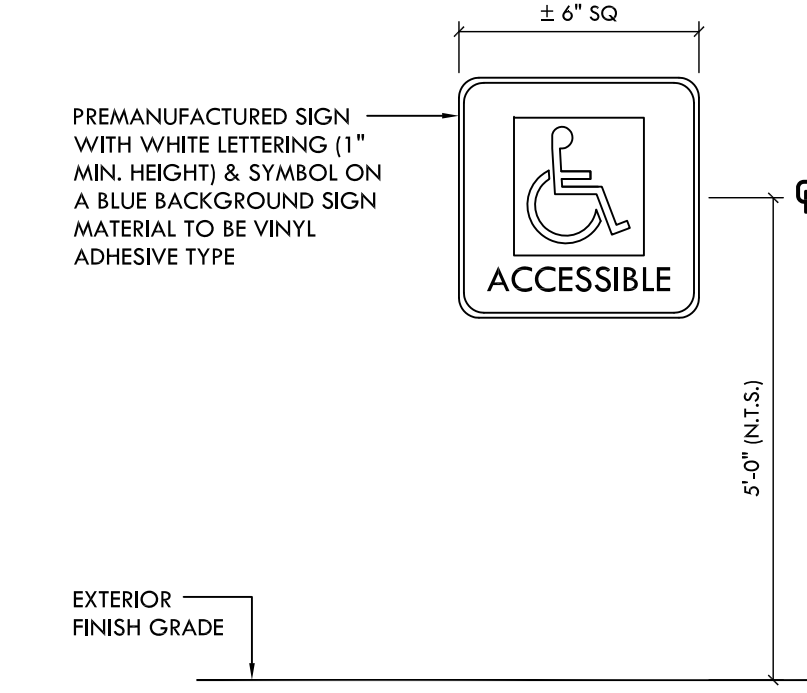
REV.	DESCRIPTION	DATE
1	ISSUE FOR PRICING	10.06.14

**MILLWORK
DETAILS**

SCALE AS NOTED
PROJECT NO: 13001.04
THIS SHEET IS 30" x 42"

A8.2

- ACCESSIBLE PATH OF TRAVEL PER CBC 11338.5:
 - ARE CONTINUOUSLY ACCESSIBLE.
 - HAVE A MAXIMUM 1/2" CHANGE IN ELEVATION.
 - MAXIMUM CROSS-SLOPES OF 2%.
 - WHERE NECESSARY TO CHANGE ELEVATION AT A SLOPE EXCEEDING 5% (i.e., 1:20), SHALL HAVE PEDESTRIAN RAMPS COMPLYING WITH CBC SECTION 11338.5.
 - HAVE A MINIMUM 48" IN WIDTH.
- ALL INTERNATIONAL SIGNS OF ACCESSIBILITY SHALL COMPLY W/ CBC FIGURE 11B-6 & SECTION 1117B.5.8 AND SHALL BE LOCATED AT THE EXISTING BUILDING ENTRANCE.
- ALL GROUND FLOOR SURFACES ALONG ACCESSIBLE ROUTES AND IN ACCESSIBLE ROOMS & SPACES INCLUDING FLOORS, WALKS, RAMPS, & CURBS SHALL BE STABLE FIRM AND SLIP RESISTANT.
- PROVIDE TACTILE EXIT SIGN WITH THE WORDS "EXIT" TO COMPLY WITH REQUIREMENTS OF CBC SECTIONS 1011.3 & 1020.1.6. LOCATE 60" A.F.F. IN A POSITION THAT IS READILY VISIBLE WHEN THE DOOR IS IN EITHER THE OPEN OR CLOSED POSITION. SEE DETAIL 15/A0.3.
- PROVIDE TACTILE EXIT SIGN WITH THE WORDS "EXIT ROUTE" TO COMPLY WITH REQUIREMENTS OF CBC SECTIONS 1011.3 & 1020.1.6. LOCATE 60" A.F.F. IN A POSITION THAT IS READILY VISIBLE WHEN THE DOOR IS IN EITHER THE OPEN OR CLOSED POSITION. SEE DETAIL 15/A0.3.
- PROVIDE TACTILE EXIT SIGN WITH THE WORDS "EXIT STAIR DOWN" TO COMPLY WITH REQUIREMENTS OF CBC SECTIONS 1011.3 & 1020.1.6. LOCATE 60" A.F.F. IN A POSITION THAT IS READILY VISIBLE WHEN THE DOOR IS IN EITHER THE OPEN OR CLOSED POSITION. SEE DETAIL 15/A0.3.



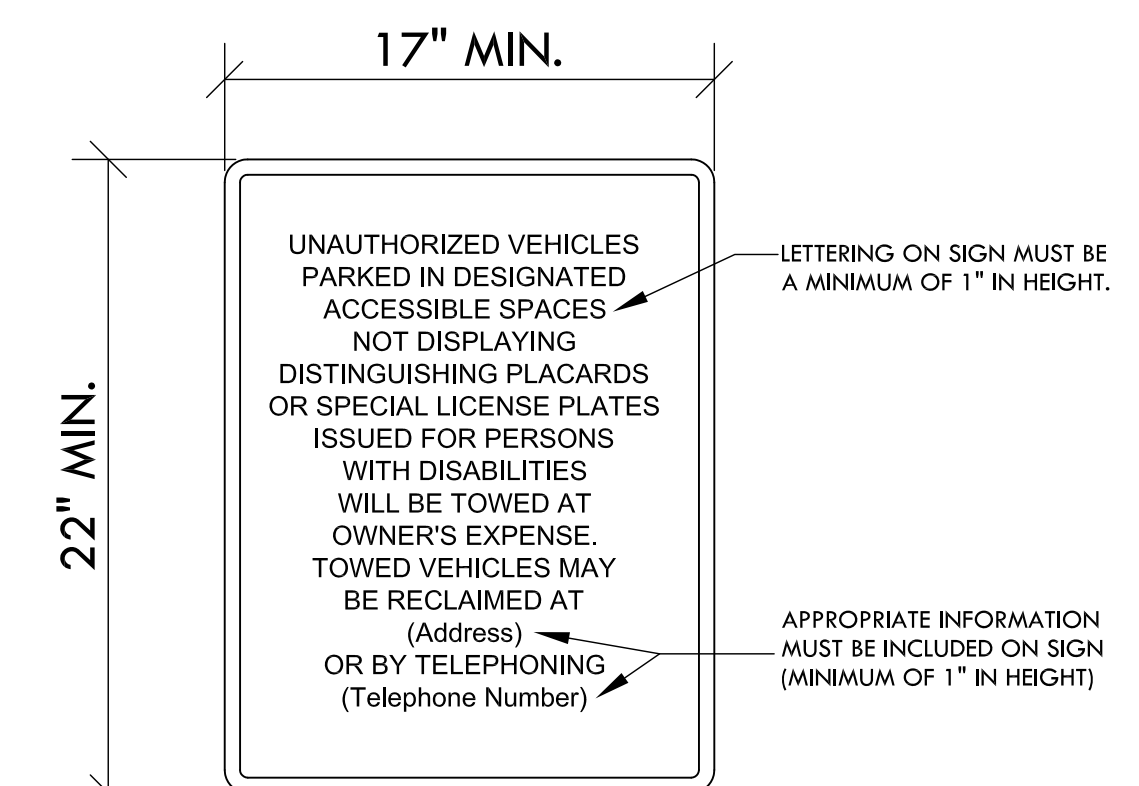
6 ACCESSIBLE ENTRANCE SIGN
NO SCALE

SITE PARKING:

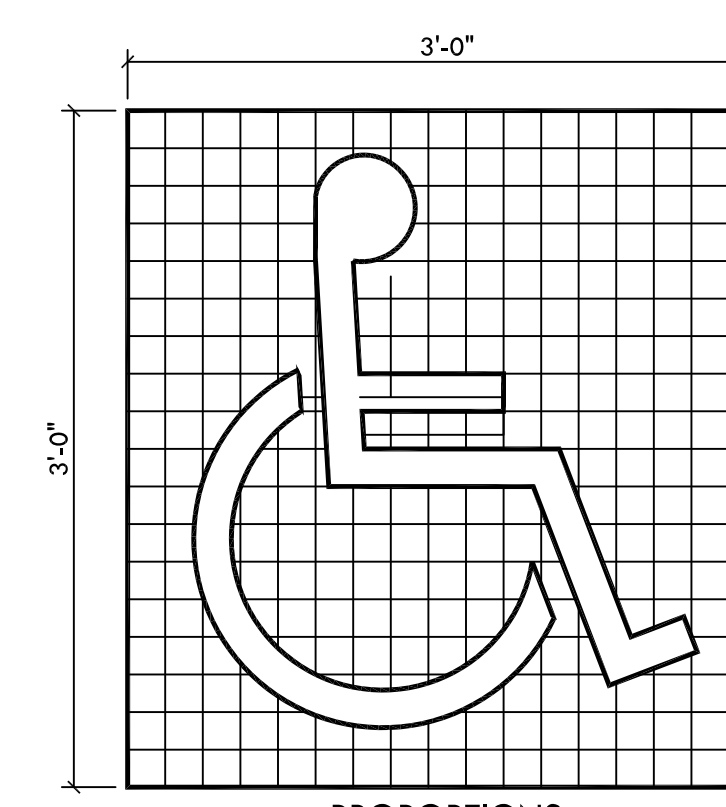
STANDARD STALL PARKING SPACES:	21
(E) COMPACT STALL PARKING SPACES:	10
ACCESSIBLE PARKING SPACES:	1
VAN ACCESSIBLE SPACES:	1
TOTAL SPACES:	33
REQUIRED PARKING: 10,710 / 333.33 = 32 SPACES EXISTING SPACES = 33 SPACES PROPOSED PARKING = 34 SPACES	

5 PARKING ANALYSIS
NO SCALE

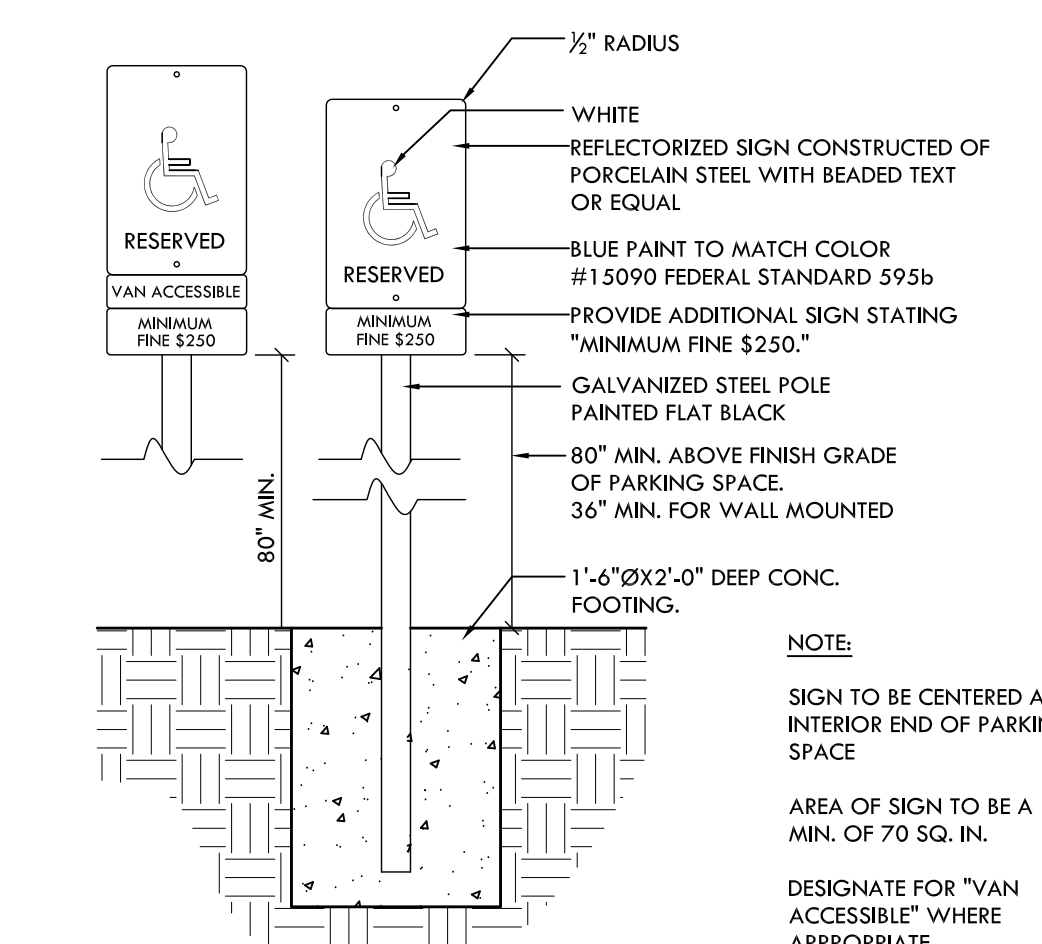
3 GENERAL ACCESSIBILITY NOTES / KEY NOTES
NO SCALE



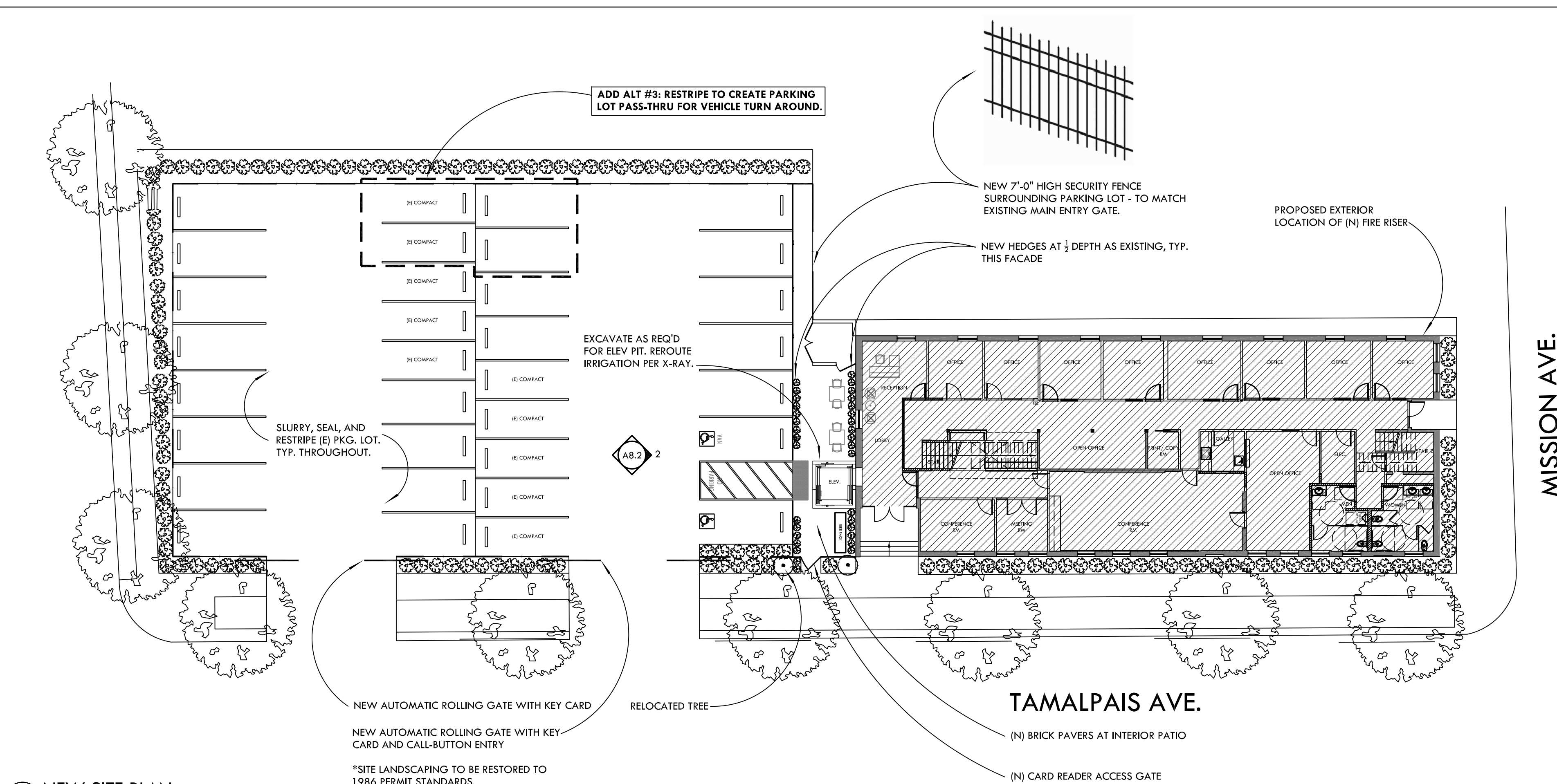
2 ACCESSIBLE TOW AWAY SIGN
NO SCALE



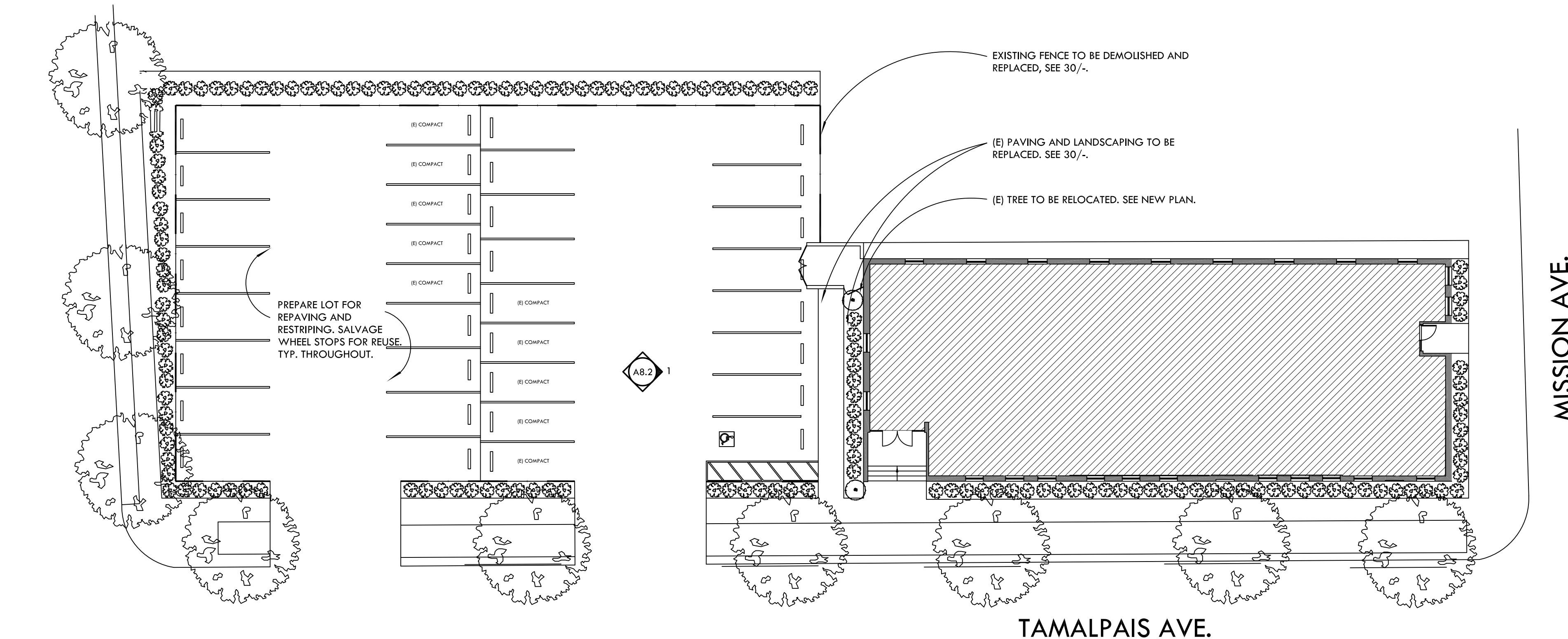
4 SYMBOL OF ACCESSIBILITY
NO SCALE



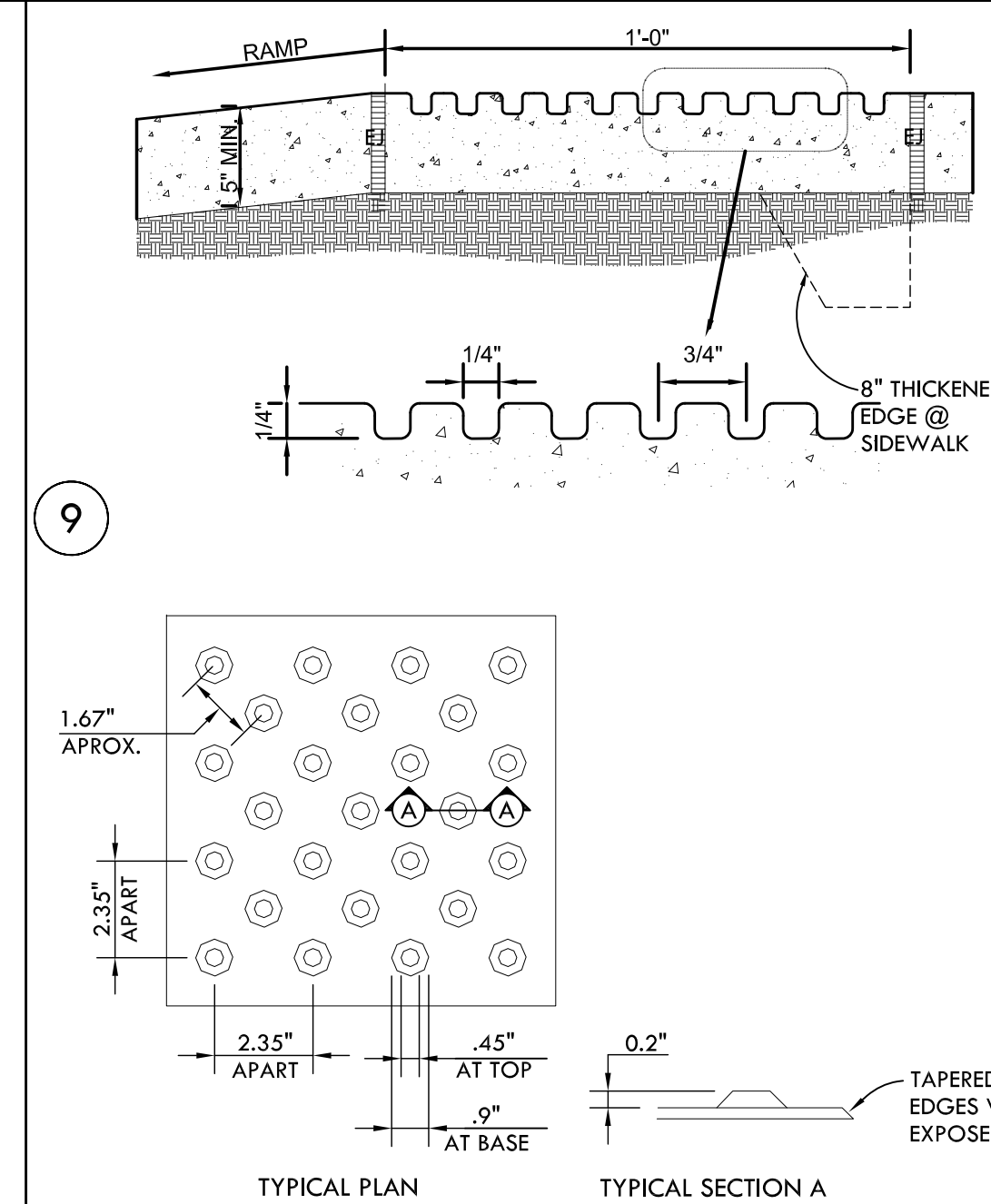
1 ACCESSIBLE PARKING SIGNAGE
NO SCALE



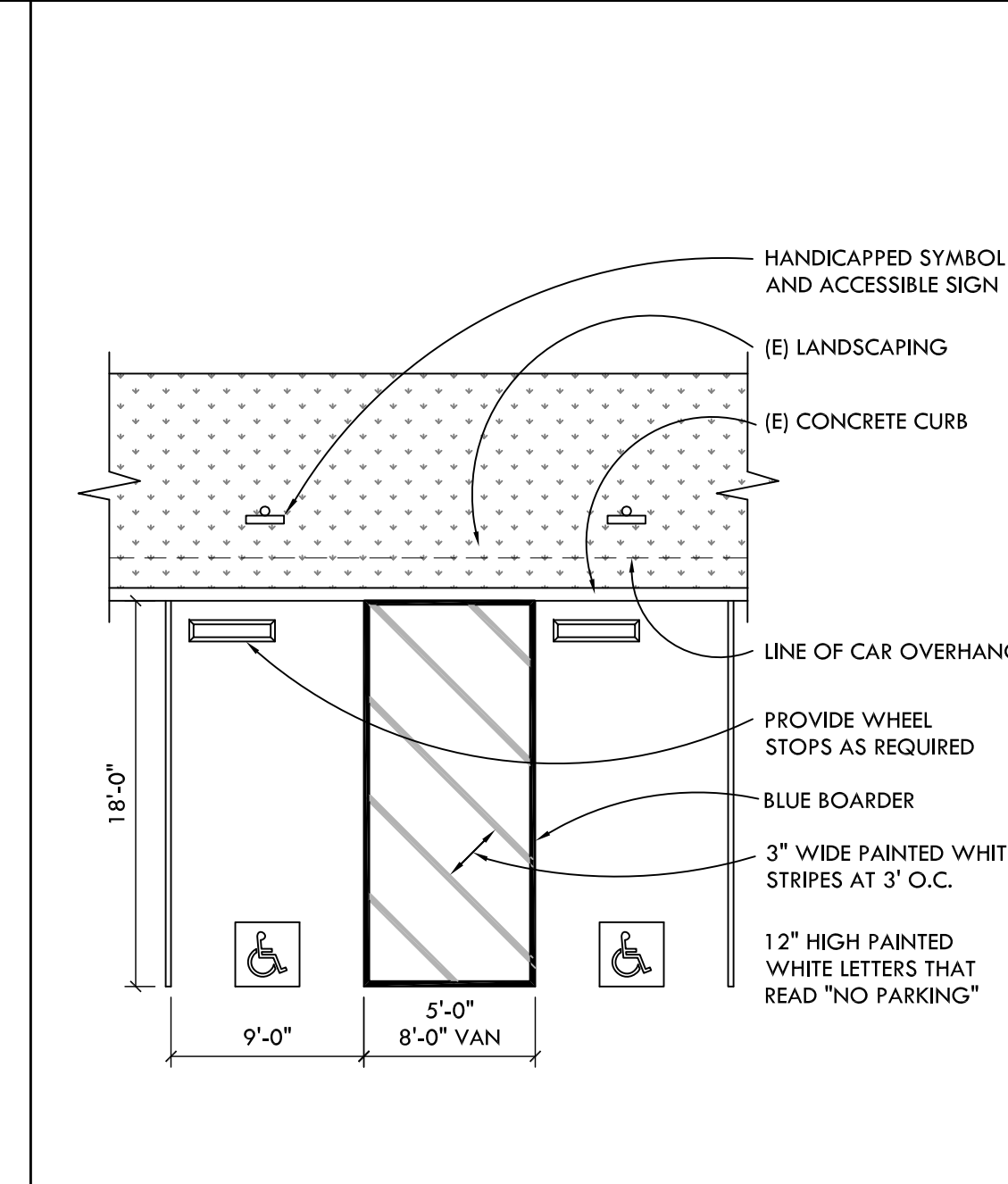
30 NEW SITE PLAN
SCALE: 1/16" = 1'-0"



28 EXISTING SITE PLAN - FOR REFERENCE ONLY
SCALE: 1/16" = 1'-0"



8 TRUNCATED DOMES
NO SCALE



7 ACCESSIBLE PARKING STALL
NO SCALE

Electronic Data Transfer Disclaimer: SENDES (Weske Karr) represents that various existing record documents and data sources created by others were used to assemble the DATA being transmitted. The RECIPIENT acknowledges that changes and modifications may have occurred to the referenced property or project that may make record documents inaccurate. The RECIPIENT further acknowledges that changes to computer documents may result in adverse consequences that the SENDEE can neither predict nor control. The RECIPIENT agrees to assume all risks associated with the use of the DATA provided, and understands that the SENDEE makes no claim or warranty as to the suitability of these drawings for any purpose. In consideration of receiving the DATA from the SENDEE, the RECIPIENT agrees, to the fullest extent permitted by law, to hold harmless and indemnify the SENDEE from and against all claims, liabilities, losses, damages, and costs, including but not limited to attorney's fees, arising out of, or in any way connected with, the use, re-use, misuse, modification, or misinterpretation of the machine-readable DATA provided by the SENDEE under this agreement.

Schematic Project Schedule
 Marin Clean Energy TI
 700 5th Ave., San Rafael
 9/3/2014
 1 of 1

<u>Starting from execution of lease:</u>		Assume	
		09.05.14	
lease +10 da.	Standard AIA Cost Plus construction contract signed and release to order long lead items	09.15.14	
lease +24 da.	80% CD set issued for hard subcontractor bids	09.29.14	
lease +38 da.	Hard bids due from subs. Release MEP and Fire Life Safety subs to do engineered drawings	10.13.14	
lease +52 da.	Submit for Building Permit	10.27.14	
lease +94 da.	Building Permit issued (allowing for one round of plan check comments and re-submittal)	12.08.14	estimated timing based on recent history
lease +95 da.	Start hard const. project including interior building fire sprinkler infrastructure (allow for holidays)	12.09.14	
lease +95 da.	Apply to MMWD for in-street sprinkler main work	12.09.14	estimated timing not guaranteed
lease +180 da.	Substantial Completion	03.09.15	incl. deducts for holidays
<u>Post Occ.:</u>			

NOTE: Elevator and site work may be performed under separate permit pending further development



**Marin Clean Energy
Board of Directors Meeting
Thursday, November 6, 2014
7:00 P.M.**

**San Rafael Corporate Center, Tamalpais Room
750 Lindero Street, San Rafael, CA 94901**

Agenda Page 1 of 2

Dawn Weisz
Executive Officer

Damon Connolly
Chair
City of San Rafael

Kathrin Sears
Vice Chair
County of Marin

Bob McCaskill
City of Belvedere

Sloan C. Bailey
Town of Corte Madera

Larry Bragman
Town of Fairfax

Kevin Haroff
City of Larkspur

Garry Lion
City of Mill Valley

Brad Wagenknecht
County of Napa

Denise Athas
City of Novato

Tom Butt
City of Richmond

Carla Small
Town of Ross

Ford Greene
Town of San Anselmo

Ray Withy
City of Sausalito

Emmett O'Donnell
Town of Tiburon

1 (888) 632-3674
mceCleanEnergy.org

781 Lincoln Ave., #320
San Rafael, CA 94901

1. Board Announcements (Discussion)
2. Public Open Time (Discussion)
3. Report from Executive Officer (Discussion)
4. Consent Calendar (Discussion/Action)
 - C.1 9.18.14 Board Retreat Minutes
 - C.2 10.2.14 Board Minutes
 - C.3 Monthly Budget Report
5. Appointment of Chair and Vice-Chair for MCE Board (Discussion/Action)
6. Resolution No. 2014-XX Honoring MCE Board Member Damon Connolly (Discussion/Action)
7. Appointment of Directors to MCE Standing Committees (Discussion/Action)





**Marin Clean Energy
Board of Directors Meeting
Thursday, November 6, 2014
7:00 P.M.**

**San Rafael Corporate Center, Tamalpais Room
750 Lindero Street, San Rafael, CA 94901**

Agenda Page 2 of 2

Dawn Weisz
Executive Officer

Damon Connolly
Chair
City of San Rafael

Kathrin Sears
Vice Chair
County of Marin

Bob McCaskill
City of Belvedere

Sloan C. Bailey
Town of Corte Madera

Larry Bragman
Town of Fairfax

Kevin Haroff
City of Larkspur

Garry Lion
City of Mill Valley

Brad Wagenknecht
County of Napa

Denise Athas
City of Novato

Tom Butt
City of Richmond

Carla Small
Town of Ross

Ford Greene
Town of San Anselmo

Ray Withy
City of Sausalito

Emmett O'Donnell
Town of Tiburon

1 (888) 632-3674
mceCleanEnergy.org

781 Lincoln Ave., #320
San Rafael, CA 94901

8. Agreement with [Counterparty Name] for MCE Power Supply (Discussion/Action)
9. Energy Efficiency Update (Discussion)
10. Communications Update (Discussion)
11. Regulatory and Legislative Update (Discussion)
12. Board Member & Staff Matters (Discussion)
13. Adjourn

