



MCE

A local, not-for-profit
electricity provider

February 26, 2025

Welcome to MCE, Hercules

- **Starting in April 2025, all Hercules electric customers—residential, commercial, and municipal—will automatically transition to MCE electric generation service.**
- **Customers now have the option to choose their energy source: PG&E or MCE.**
- This change reflects a decision made by the City Council in 2023 and was approved by the California Public Utilities Commission.

**Your Energy,
Your Choice**

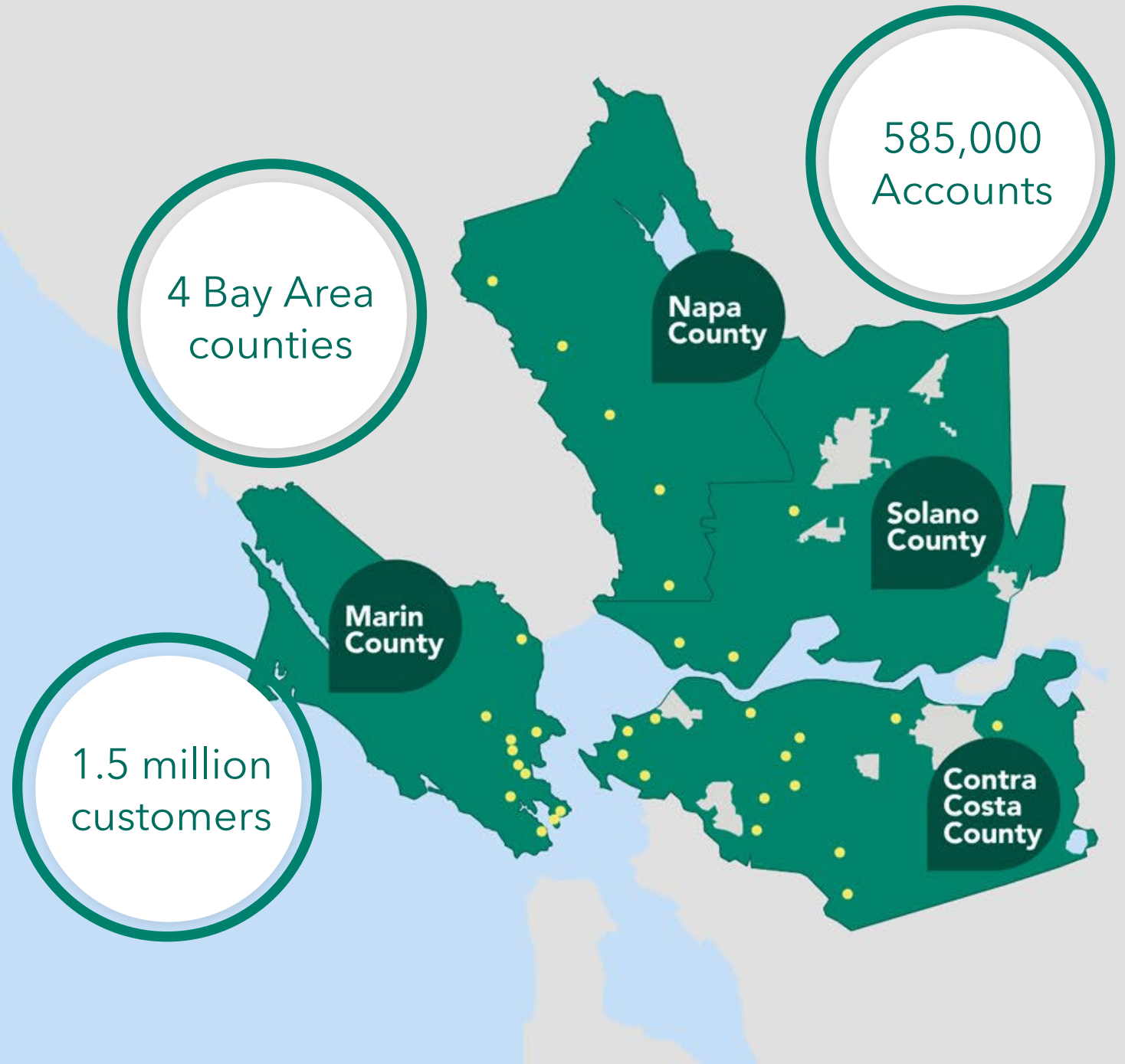
Who is MCE?

- **Community Choice Energy provider, serving Bay Area customers since 2010.**
- **We are a local government agency, governed by a board of elected officials from the communities we serve, and regulated by the same agencies that oversee PG&E.**
- We serve nearly 600,000 customers, have saved them over \$83 million on their bills since 2010, and eliminated more than 500,000 metric tons of CO²

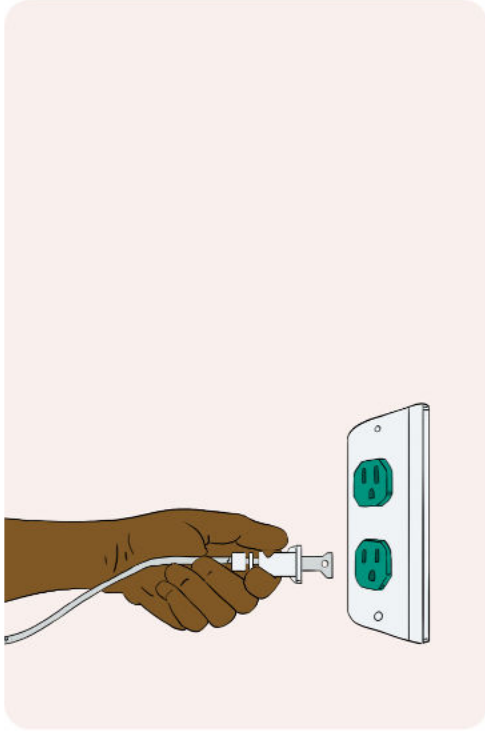


Not-for-Profit Public Agency

**34 Board Members.
Elected officials.
No tax dollars.**

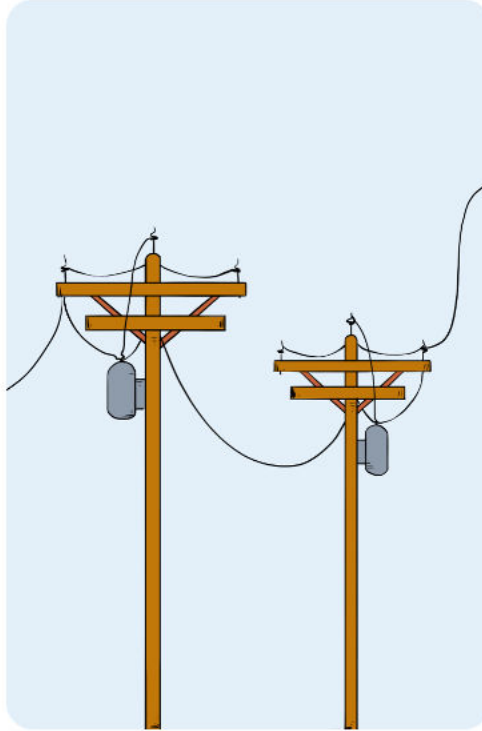


How MCE Works



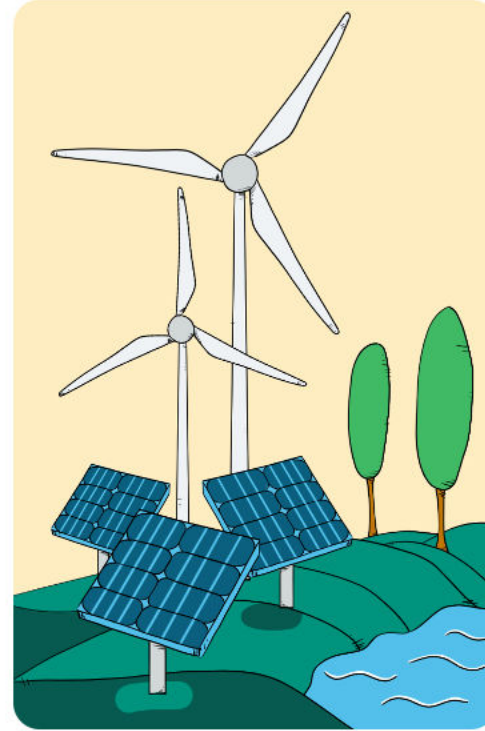
You

Benefit from cleaner air,
stable rates, choice,
and local control



PG&E

Delivers energy,
maintains lines, and
sends bills



MCE

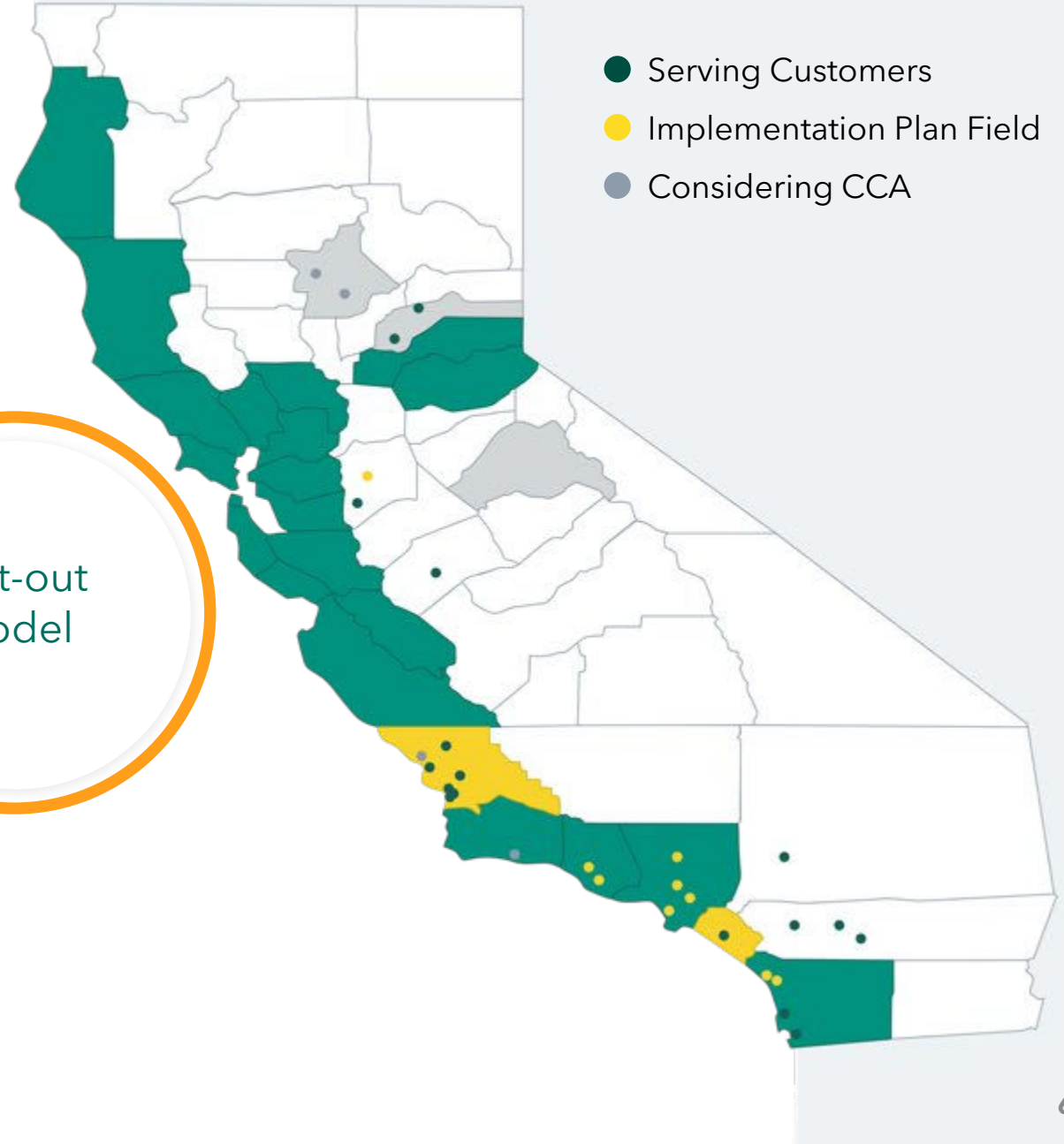
Buys and builds
fossil-free energy
for you

Community Choice in California

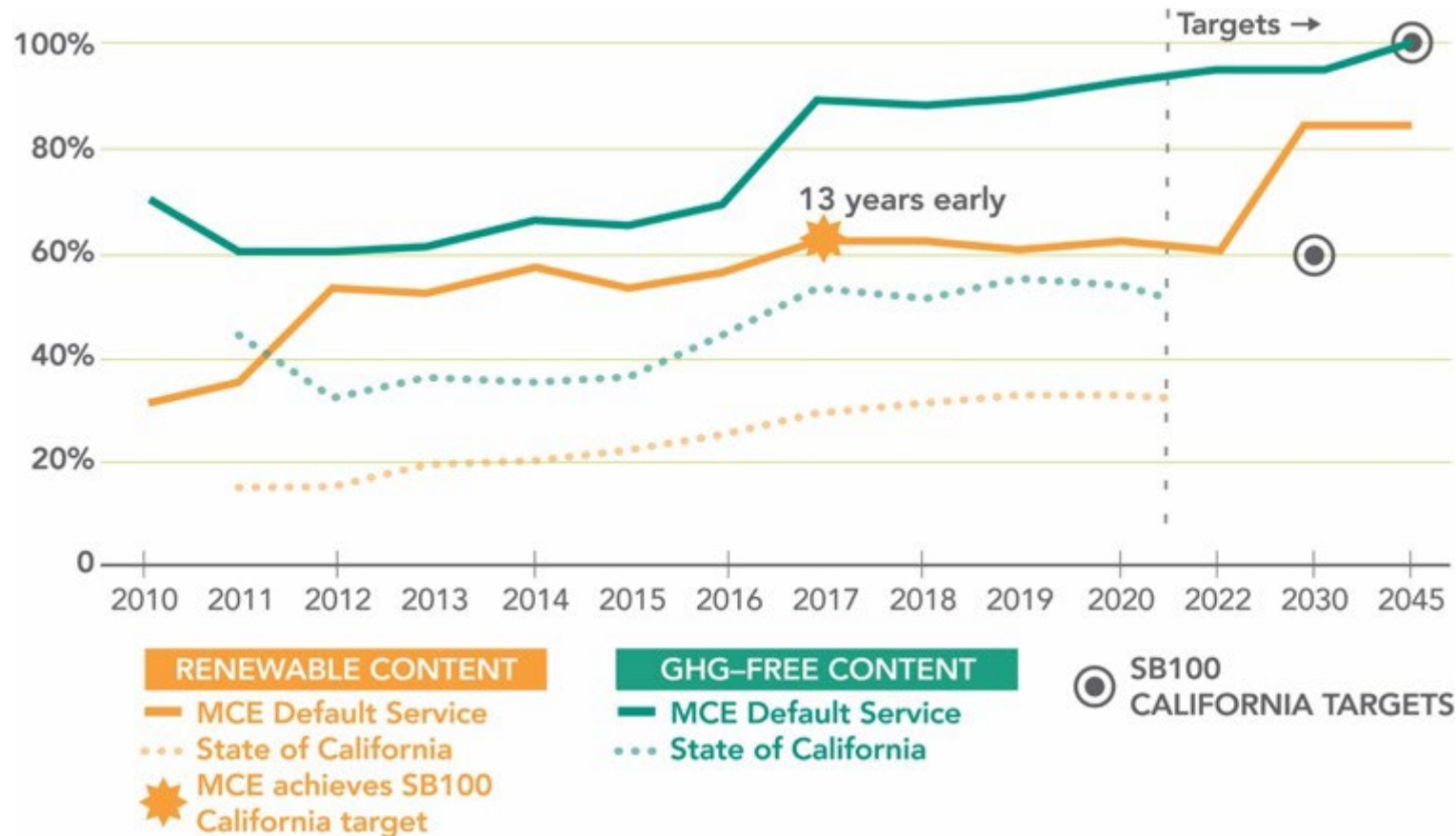
Enabling
Legislation
AB 117, 2002

Over 14 million
customers & 200
communities

Opt-out
model



Clean Energy Leadership



100%
fossil-free

95%
greenhouse gas-free

60%
renewable
compared to 38%
from PG&E

18 years
early on meeting
State goals

The Power of MCE

500K

metric tons of
GHGs eliminated
since 2010

95%

carbon-free
since 2022

\$3.8B

committed to
building new CA
renewable projects

2.9M

of labor hours
supported

60% renewable
since 2017,

100%

renewable option

\$358M


reinvested in MCE
communities since
2010

48MW

of new renewable
projects built in our
service area

6,400

jobs created



Your Energy Choices

Choice is Power

MCE
Deep Green
100%
RENEWABLE

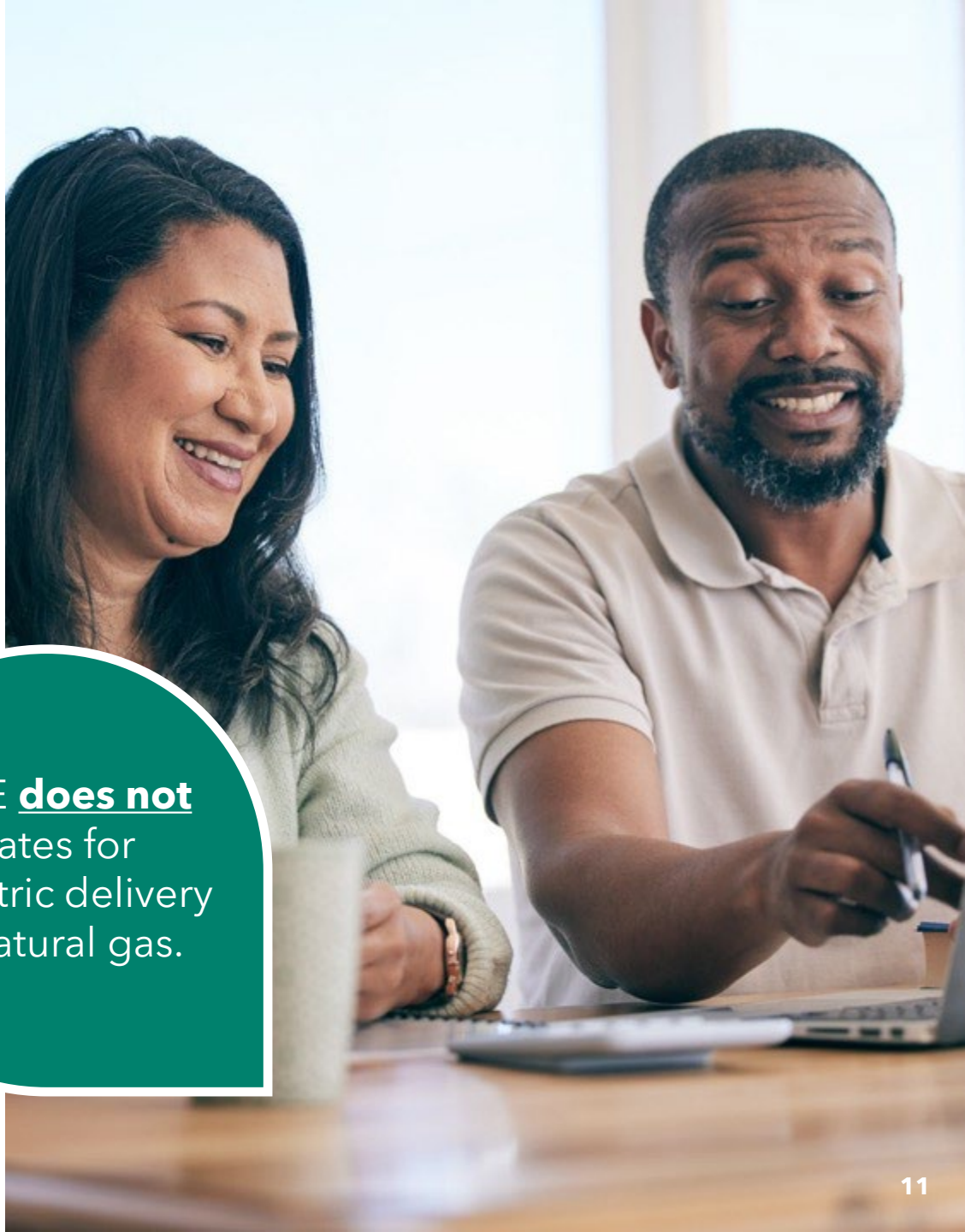
Default Service

MCE
Light Green
60%
RENEWABLE

PG&E
33%
RENEWABLE


Understanding MCE Rates

- **MCE sets rates for electricity generation only.**
- MCE typically sets its rates once a year.
- MCE's rates are released to the public with a 30-day review and comment period. **All rate changes are reviewed publicly by MCE's Board of Directors and approved in a voting meeting.**

A photograph of a woman and a man sitting at a wooden desk in a bright, modern office. The woman, on the left, has long dark hair and is wearing a light green sweater. The man, on the right, has a beard and is wearing a light-colored polo shirt. They are both smiling and looking towards the right side of the frame. A laptop is open on the desk in front of them.


MCE **does not** set rates for electric delivery or natural gas.

Sample Bill

	ENERGY STATEMENT www.pge.com/MyEnergy	Account No: 0123456789-0 Statement Date: 06/08/2022 Due Date: 06/29/2022
Service For: DEE P. GREENE 123 MAIN ST. VALLEJO, CA 94590	Your Account Summary Amount Due on Previous Statement \$236.22 Payment(s) Received Since Last Statement -236.22 Previous Unpaid Balance \$0.00 Current PG&E Electric Delivery Charges \$159.36 Current Gas Charges 19.98 Total Amount Due by 06/29/2022 \$179.34	

With PG&E
Service

Sample Bill

 ENERGY STATEMENT www.pge.com/MyEnergy		Account No: 0123456789-0 Statement Date: 06/08/2022 Due Date: 06/29/2022														
Service For: DEE P. GREENE 123 MAIN ST. VALLEJO, CA 94590	Your Account Summary <table><tr><td>Amount Due on Previous Statement</td><td>\$236.22</td></tr><tr><td>Payment(s) Received Since Last Statement</td><td>-236.22</td></tr><tr><td>Previous Unpaid Balance</td><td>\$0.00</td></tr><tr><td>Current PG&E Electric Delivery Charges</td><td>\$100.46</td></tr><tr><td>MCE Electric Generation Charges</td><td>47.70</td></tr><tr><td>Current Gas Charges</td><td>19.98</td></tr><tr><td>Total Amount Due by 06/29/2022</td><td>\$168.14</td></tr></table>		Amount Due on Previous Statement	\$236.22	Payment(s) Received Since Last Statement	-236.22	Previous Unpaid Balance	\$0.00	Current PG&E Electric Delivery Charges	\$100.46	MCE Electric Generation Charges	47.70	Current Gas Charges	19.98	Total Amount Due by 06/29/2022	\$168.14
Amount Due on Previous Statement	\$236.22															
Payment(s) Received Since Last Statement	-236.22															
Previous Unpaid Balance	\$0.00															
Current PG&E Electric Delivery Charges	\$100.46															
MCE Electric Generation Charges	47.70															
Current Gas Charges	19.98															
Total Amount Due by 06/29/2022	\$168.14															
Questions about your bill? Mon-Fri 7 a.m.-7 p.m. Saturday 8 a.m.-5 p.m. Phone: 1-800-743-5000 www.pge.com/MyEnergy																

MCE charges
replaces
PG&E's

Cost Comparison

	<div><div><div>60% renewable</div></div></div> <div>MCE Light Green \$113.89</div>	<div><div><div>100% renewable</div></div></div> <div>MCE Deep Green \$117.04</div>	<div><div><div>33% renewable</div></div></div> <div>PG&E \$127.47</div>
Average Total Cost			
Electricity Generation	\$45.79 served by MCE	\$48.94 served by MCE	\$58.44 served by PG&E
PG&E Electricity Delivery	\$76.36	\$76.36	\$76.36
Additional PG&E Fees	-\$8.26	-\$8.26	-\$7.33
Local Community Reinvestment	✓	✓	
Access to MCE Rebates and Programs	✓	✓	
Access to PG&E Rebates and Programs	✓	✓	✓

Discount Programs

- **CARE, FERA, and Medical Baseline Allowance** are provided in full to MCE customers;
- **Discount programs remain the same with MCE service.** Includes: California Arrearage Payment Program, Percentage of Income Payment Plan, and PG&E employee discounts.

A man and a woman are sitting at a wooden table in a kitchen, looking at a laptop. The woman is on the left, wearing an orange top, and the man is on the right, wearing a blue denim shirt. They are both looking at a piece of paper the man is holding. A calculator is on the table next to the laptop. The background shows a kitchen with shelves and a clock.

**no need
to reapply**

Rooftop Solar Customers

MCE	PG&E
<i>Monthly surplus generation credited at retail rate</i>	
Surplus annual generation is credited at \$0.02 + the wholesale rate	Surplus annual generation is credited at the wholesale rate
Billing: Monthly charges and credits for generation	Billing: Monthly and annual true-up
60% or 100% renewable energy service when you use energy from the grid	33% renewable energy service when you use energy from the grid



What Hercules Customers Can Expect

Automatic transition to MCE service beginning in April

- Customers will be automatically switched to MCE service starting with the April electric bill.
 - Solar customers will transition at time of true-up
- Monthly utility bills will still come from PG&E.
- Opt out and return to PG&E:
 - Online: mcecleanenergy.org/opt-out
 - By phone: (888) 632-3674.
- There is no charge to opt out within the first 60 days of MCE service. After 60 days, there is a one-time administrative fee to opt out:
 - \$5 for residential accounts
 - \$25 for commercial accounts.



Getting the Word Out

Direct Mail and Emails

- All customers will receive direct mail in February.
- Customers will then receive follow-up notification emails in March, April, and May.

Community Workshops

- **In-person workshops** at Hercules City Hall
 - February 26 and March 26, 6:30 PM
- **Virtual workshops**
 - March 5, March 12 (*Solar, Storage, EV*)
April 16, May 7, 6:30pm

Dedicated Hercules Webpage

mcecleanenergy.org/Hercules



Thank you!



mceCleanEnergy.org
info@mceCleanEnergy.org