



MCE

A local, not-for-profit
electricity provider



September 24, 2025



Agenda

12:00 PM Welcome + Introductions

12:05 PM Presentation MCE Energy Efficiency Portfolio

12:35 PM Q&A

12:50 PM Announcements

12:55 PM Closing + Next Steps

Presenters

Facilitator: Mariela Herrick

Presenters: Alice Havenar-Daughton, Jennifer Green, Alex Valenti



MCE 2028-2031 EE Application Overview

Background

- **CPUC Application:** Funding request in Feb 2026 for EE programs (2028–2031)
- **Track Record:** EE Program Administrator since 2014
- **Investment:** \$10.5M spent on EE programs in 2024
- **Collaboration:** Joint Cooperation Memo with BayREN & PG&E

History of MCE EE Programs

2013-2017

Multifamily Energy Savings Program

Small Commercial

On Bill Financing

Home Energy Reports

2018-2023

Multifamily Energy Savings Program

Small Commercial

Home Energy Reports

Com. Flex Market

Strategic Energy Management

Home Energy Savings

Ag & Ind. Resources

Green Workforce Pathways

Small Business Energy Advantage

Seasonal Savings

2024-2027

Multifamily Energy Savings Program

Res. & Com. Flex Market

Strategic Energy Management

Home Energy Savings

Ag & Ind. Resources

Green Workforce Pathways

Small Business Energy Advantage

Red = programs closing

Green = programs opening

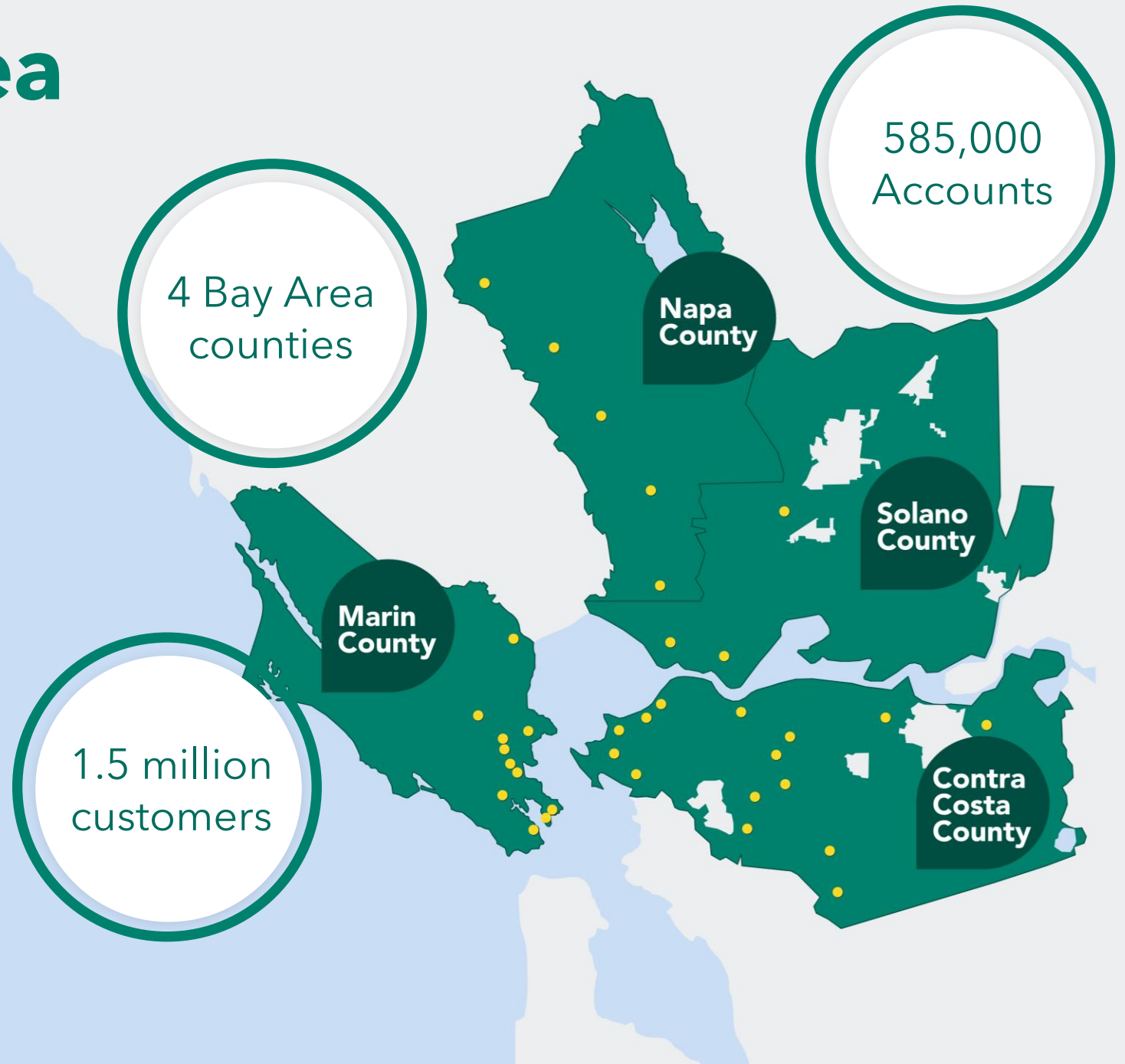
MCE Service Area

Service area overlaps with PG&E and BayREN.

Higher household income in Marin and Contra Costa, income inequality is highest in Contra Costa.

Homeownership is high relative to the state average.

Contra Costa and Solano host heavy industry.



Climate Zones

Temperatures are cooler than standard

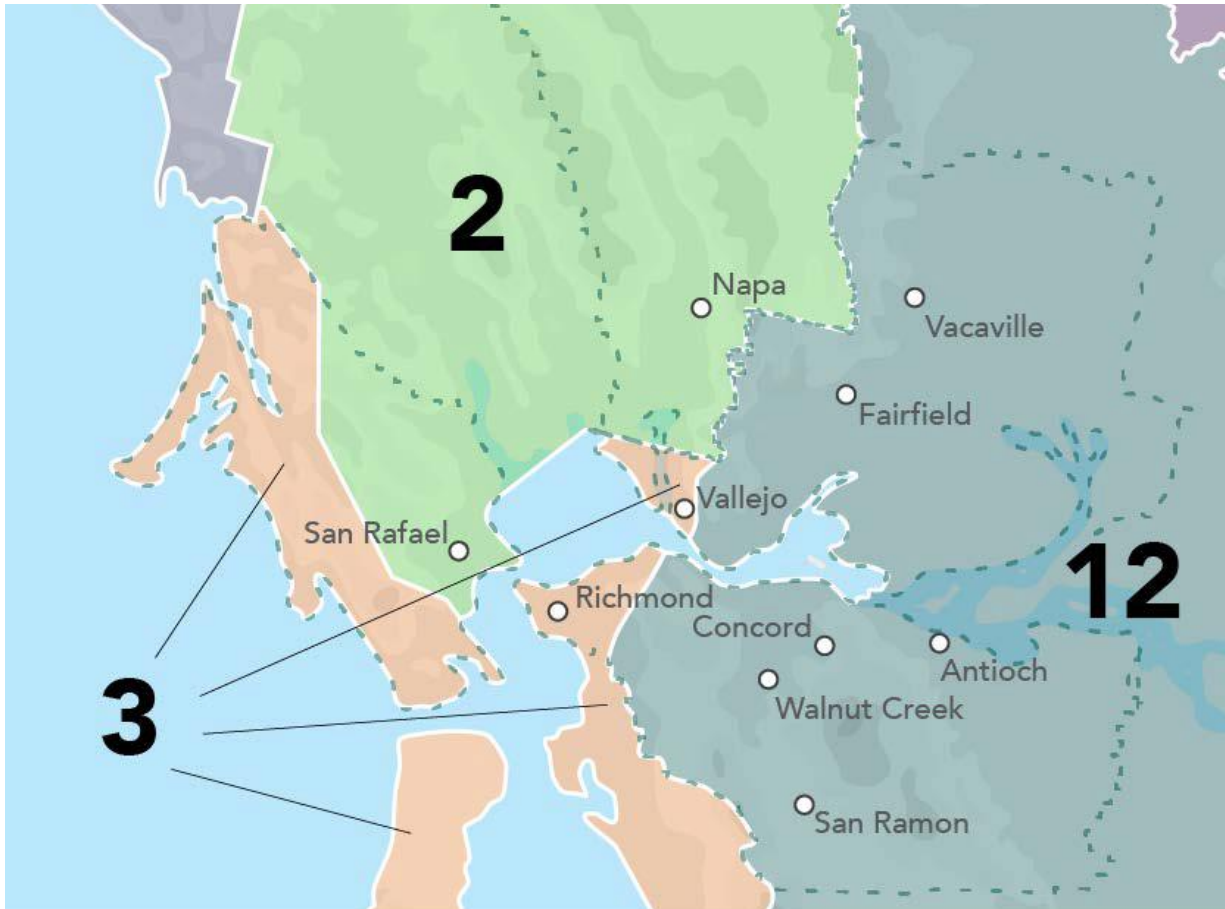
Climate Zone 3

Relatively mild temperatures

Climate Zone 2

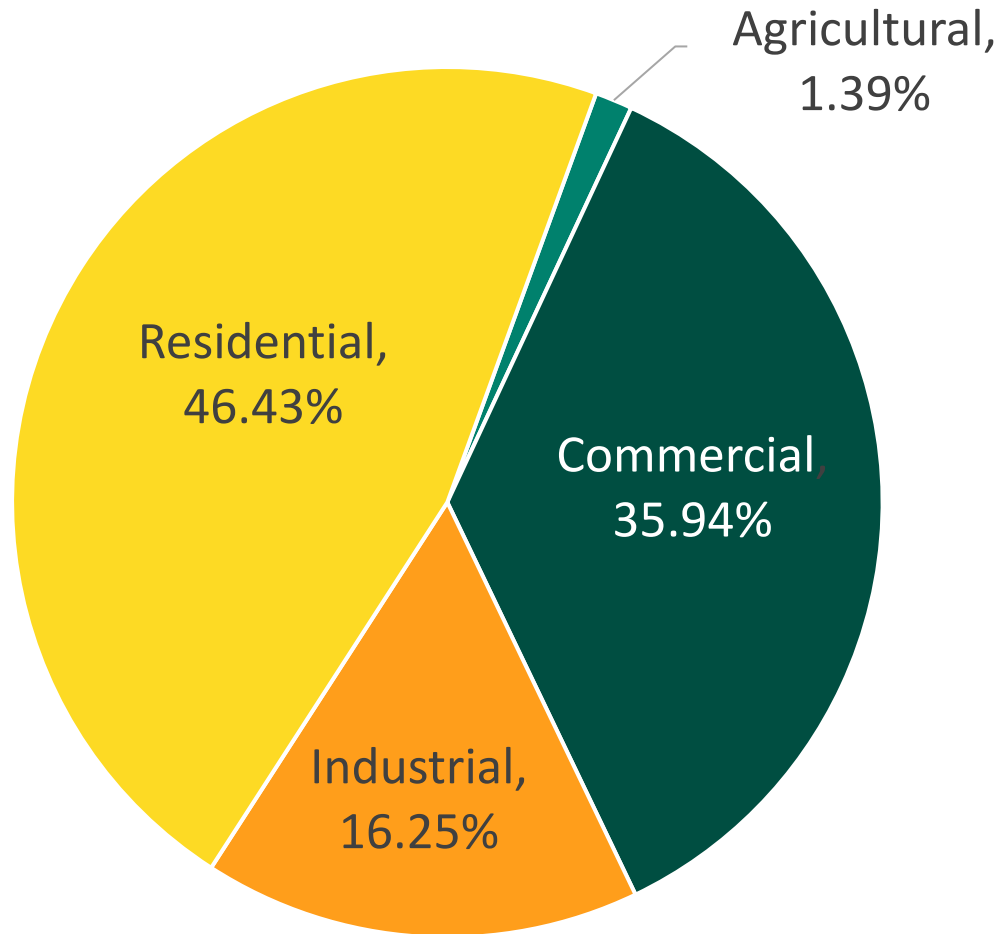
Temperatures higher than standard

Climate Zone 12

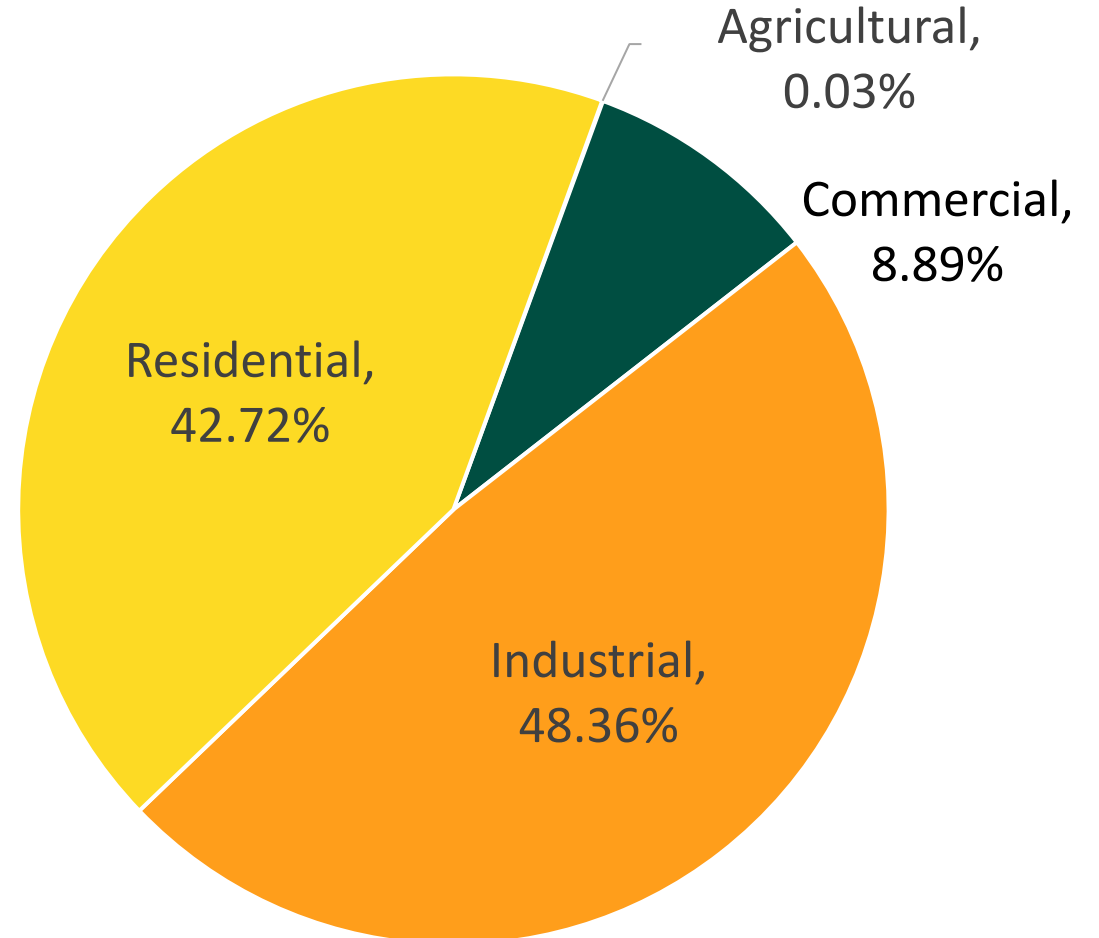


Energy Consumption by Sector

% of Total Electricity Usage



% of Total Gas Usage



Energy Efficiency Programs Goals

1. Maximize total system benefits (TSB)
2. Provide impactful equity programs
3. Support electrification and building decarbonization efforts
4. Incorporate elements of load shaping and demand response (demand flexibility) to promote reliability and increase the utilization of renewables

Resource Acquisition Segment



Continue Building on Success

Strategic Energy
Management

Flex Market Programs



Expand Our Reach

Multifamily Energy Savings
Home Energy Savings



Venture Into New Areas

Low GWP Refrigerant
Accelerator

Resource Acquisition Segment

Program	Market Sector	Customers Served per Year	Technology Types
Strategic Energy Management	Commercial	20-40	Lighting, HVAC, process systems
Flex Market Programs	Commercial & Residential	100-200	Lighting, HVAC, HPWH
Multifamily Energy Savings	Residential	120	Heat Pumps (HVAC, WH, Pool) induction cooking
Home Energy Savings	Residential	TBD	Heat Pumps
Low-GWP Refrigerant	Commercial	30-60	Refrigeration, HVAC, Lighting

Integrated Demand Side Management



Battery Storage

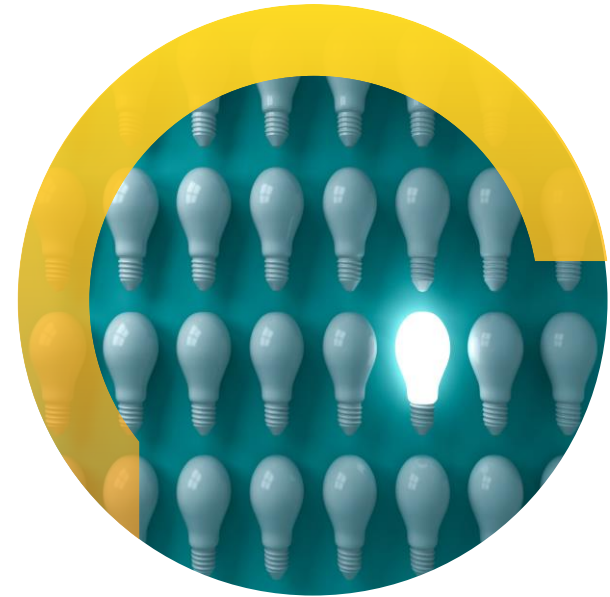
MCE Virtual Power Plant

MCE Commercial Energy
Storage Program



Managed Vehicle Charging and V2X

MCE Sync



Other Demand Flexibility

Peak Flex Market

Integrated Demand Side Management

Program	Market Sector	Customers Served per Year	Technology Types
Commercial Energy Storage	Commercial	10-15	Battery
MCE Sync	Residential	5,000+	Managed Electric Vehicle Charging
Peak Flex	Commercial & Residential	500+	HVAC, HPWH, Lighting

Equity Segment



Small Business Energy Advantage

Education and Rebates for
Small Hard-to-Reach
Businesses



Multifamily Energy Savings

Multifamily property
technical assistance and
generous incentives for
energy efficiency and
electrification



Home Energy Savings

Energy efficiency and
electrification upgrades at
no-cost for moderate and
low-income single-family
residential customers

Equity Segment

Program	Market Sector	Projects Completed per Year	Technology Types
Multifamily Energy Savings	Residential	150	Heat Pumps (HVAC, WH) Lighting, HPWH, induction cooktops, exhaust fans, common area HP
Home Energy Savings	Residential	325	Heat Pumps (HVAC, WH), duct sealing, insulation, exhaust fans
Small Business Energy Advantage	Commercial	50-100	Lighting, HVAC, HPWH

Market Support-Green Workforce Pathways



**Electrification
Trainings and
Education**



**Contractor/job
seeker matching**



**Community
Engagement**

Market Support-Green Workforce Pathways

Program	Market Sector	Staff Served per Year	Services Provided
Workforce Trainings	Cross cutting	73	Industry-led sales and technical training stipends, access to no-cost electrification/EE courses
Contractor/job seeker matching	Cross cutting	13 (new positions)	Wrap-around job support services, workplace supply financial support, contractor/job seeker matching with vetted participants

Questions for Discussion

Stop / Start / Continue

- Which features of MCE's Energy Efficiency programs have been most beneficial or successful, and should be continued into 2028 and beyond?
- What gaps or new opportunities should MCE explore?
- Are there any activities in MCE's Energy Efficiency portfolio that should end after 2027?

Other Feedback

- Do you have any additional comments or suggestions based on today's presentation?

Questions



mceCleanEnergy.org
info@mceCleanEnergy.org

Announcements

- Community Partnership Program and Community Benefit Fund Informational Webinar **Thursday, 09/25, 10-11AM**
- Community Power Coalition Symposium is back and scheduled for **November 14, 2025**



Thank you!



mceCleanEnergy.org
info@mceCleanEnergy.org